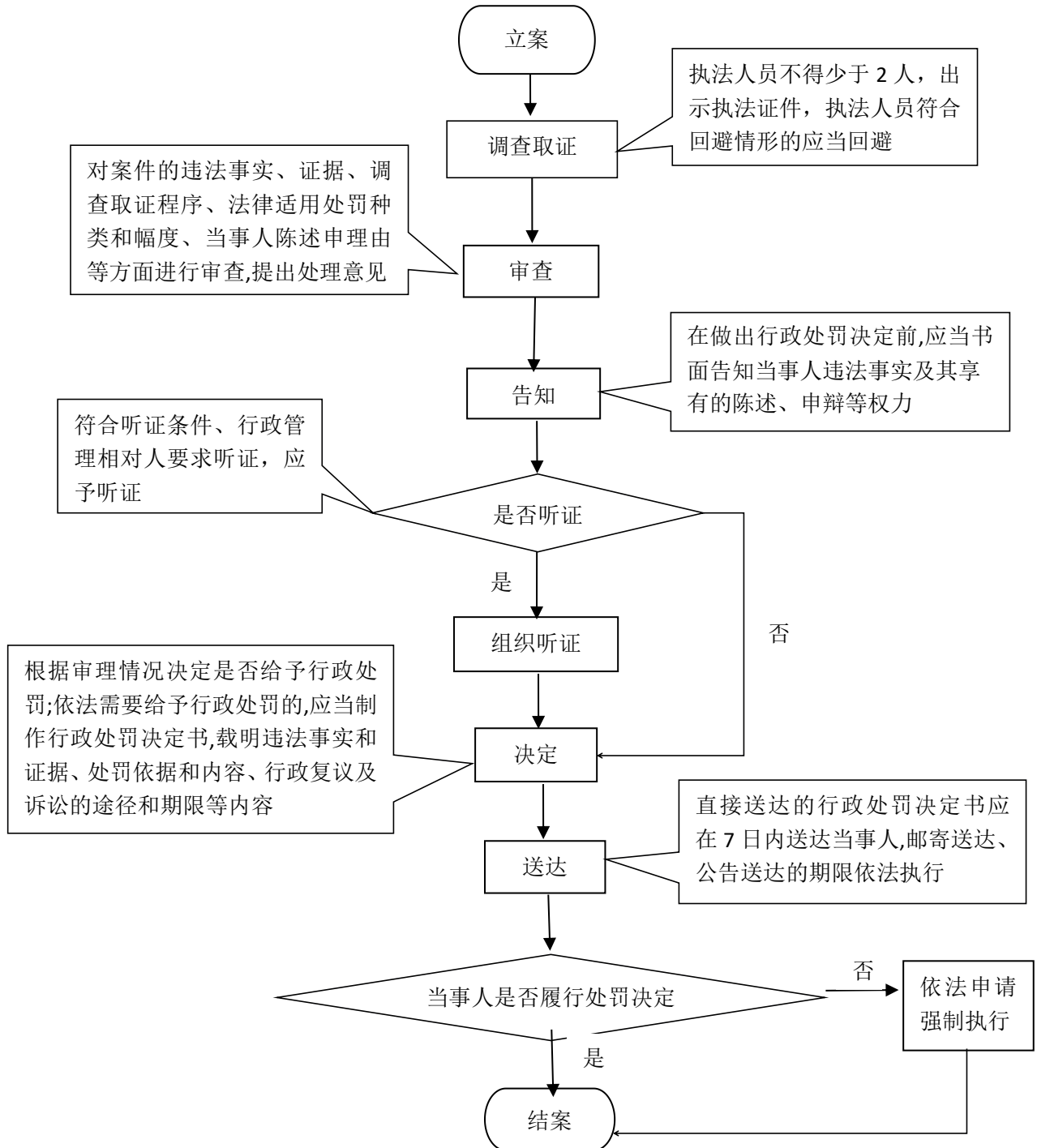


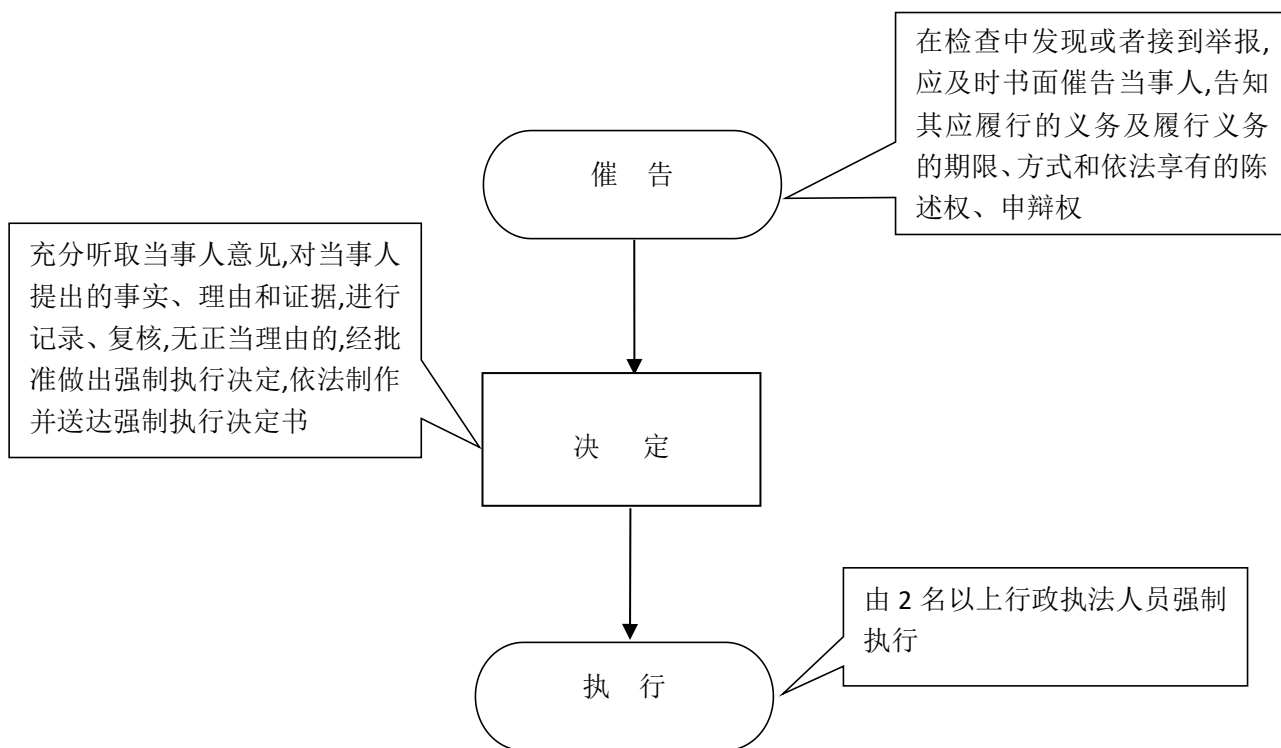
附件：

孝义市乡镇（街道）权力运行流程图

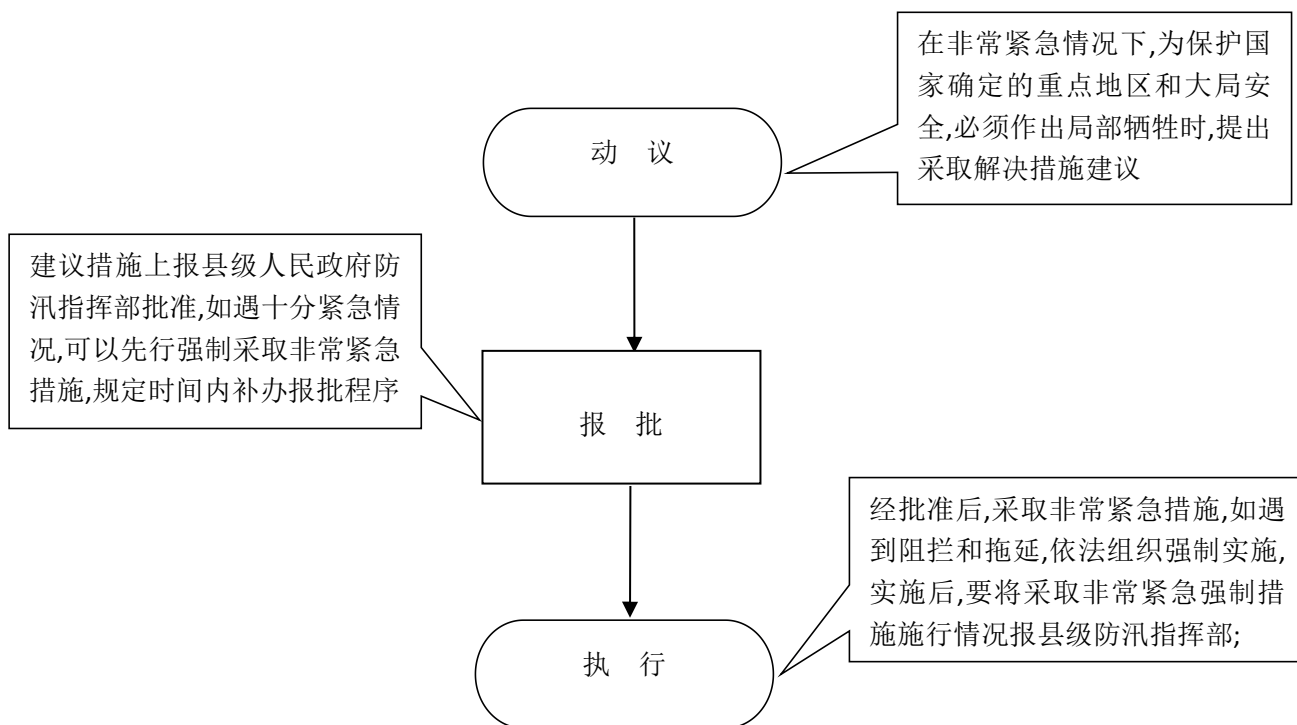
1、行政处罚类权力运行流程图（1-5）



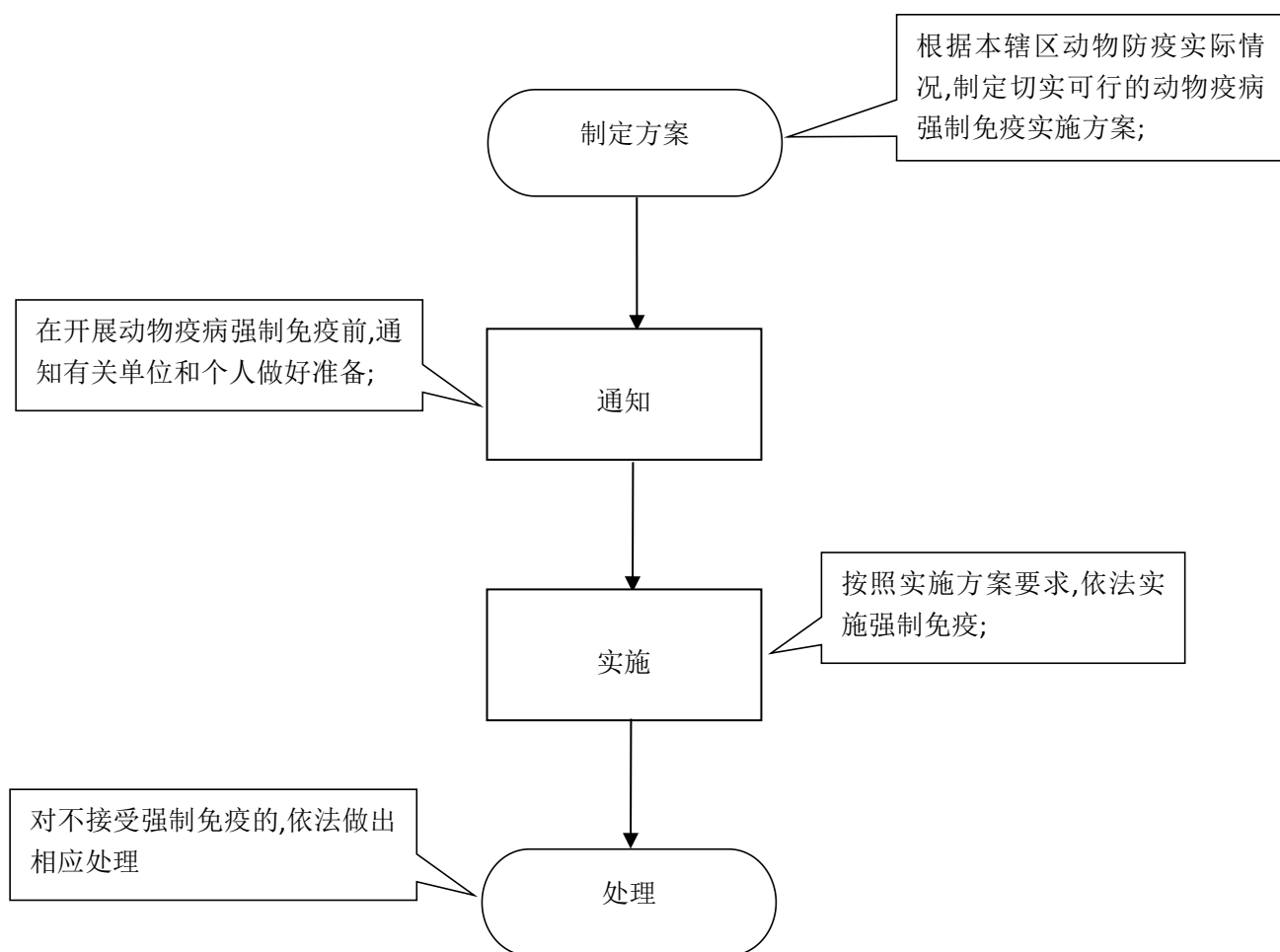
2-1、行政强制类权力运行流程图（6-8）



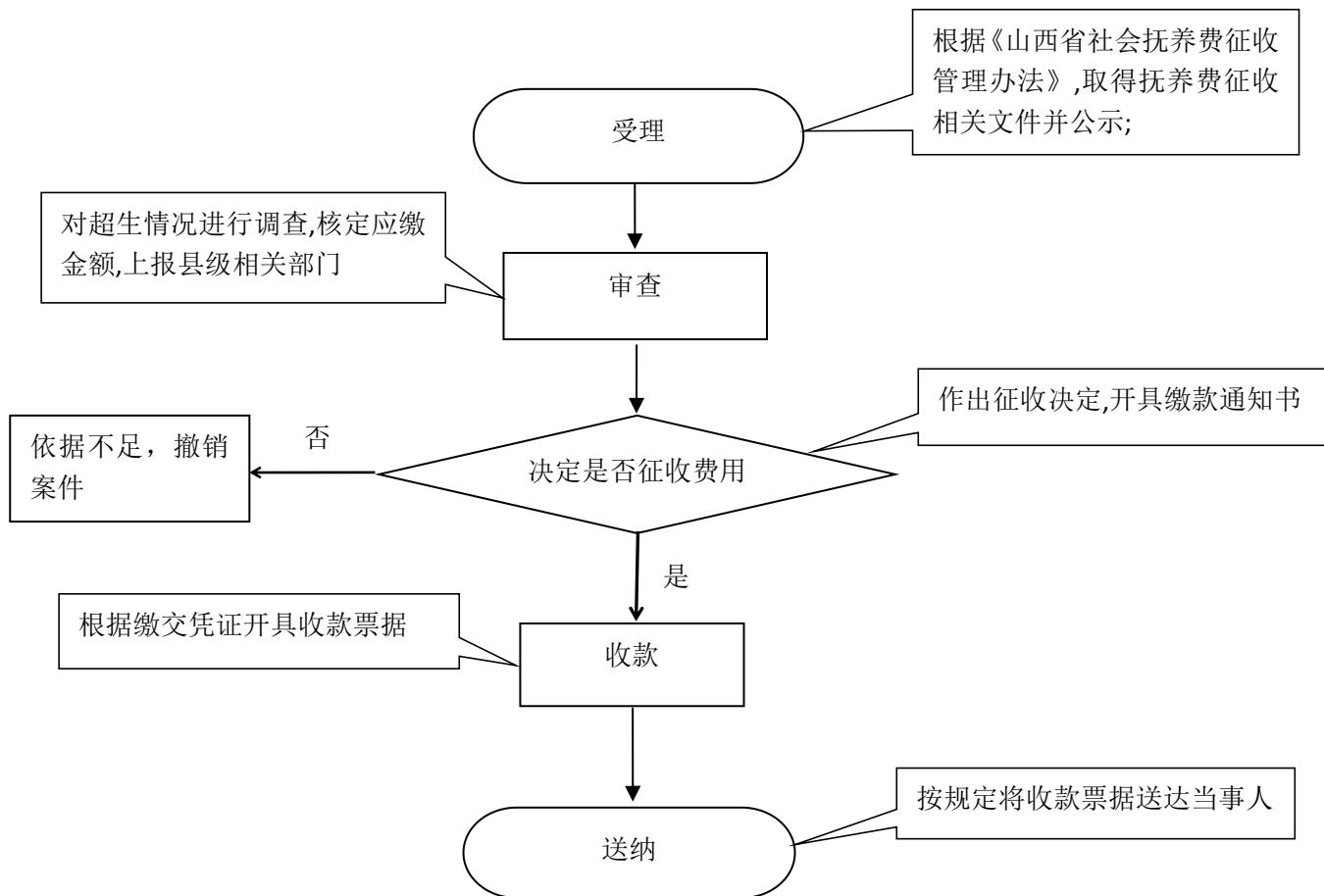
2-2、行政强制类权力运行流程图（9、11）



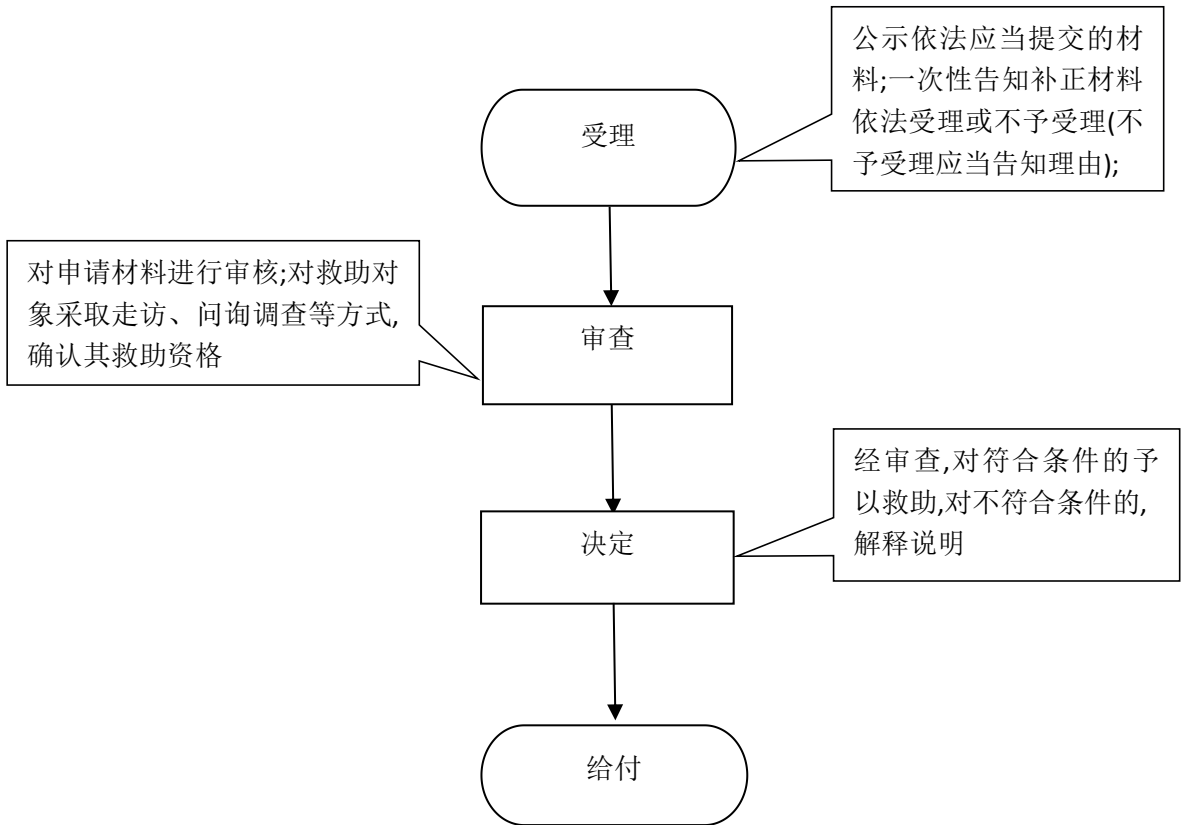
2-3、行政强制类权力运行流程图（10）



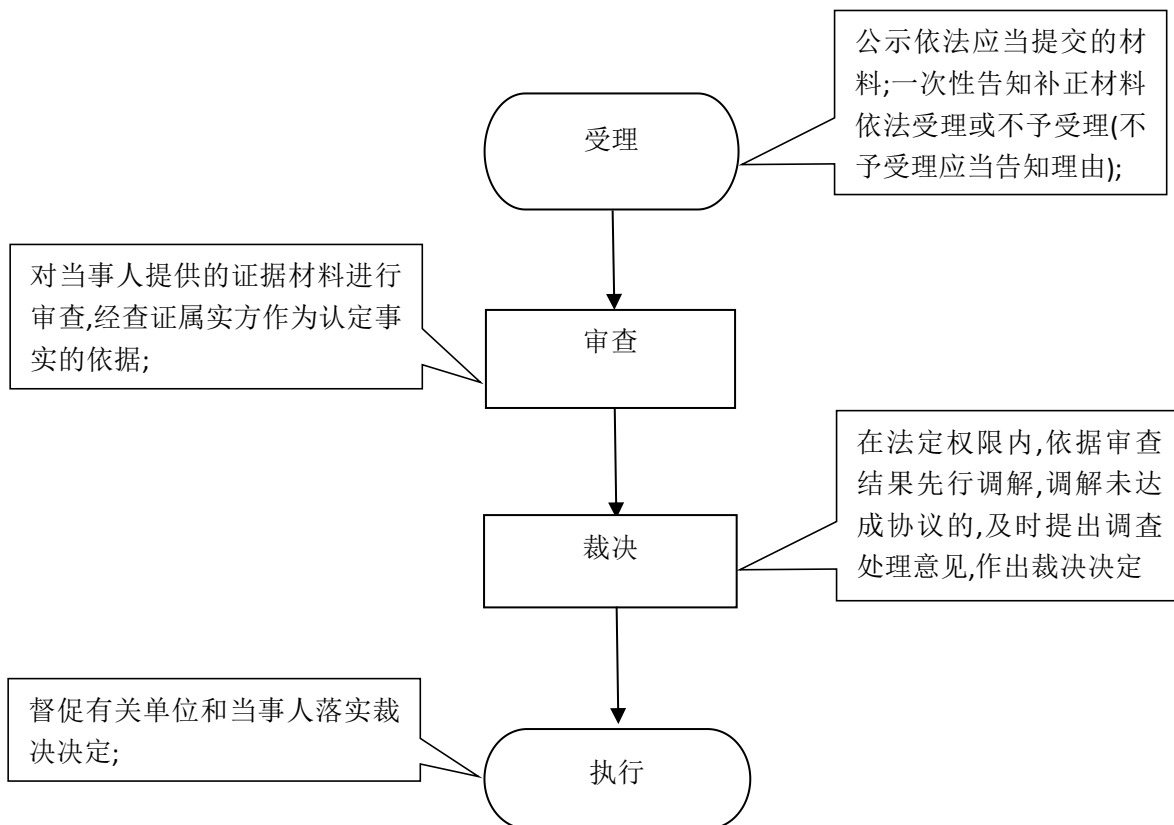
3、行政征收类权力运行流程图（12）



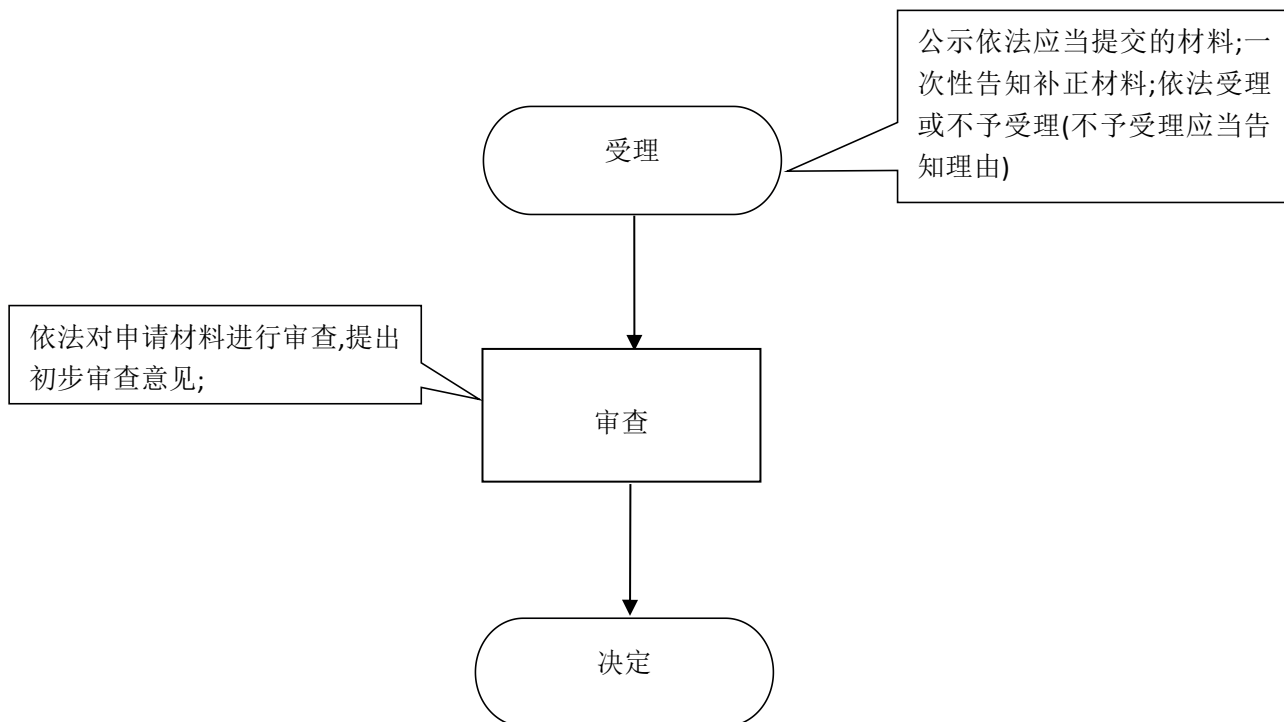
4、行政给付类权力运行流程图（13-17）



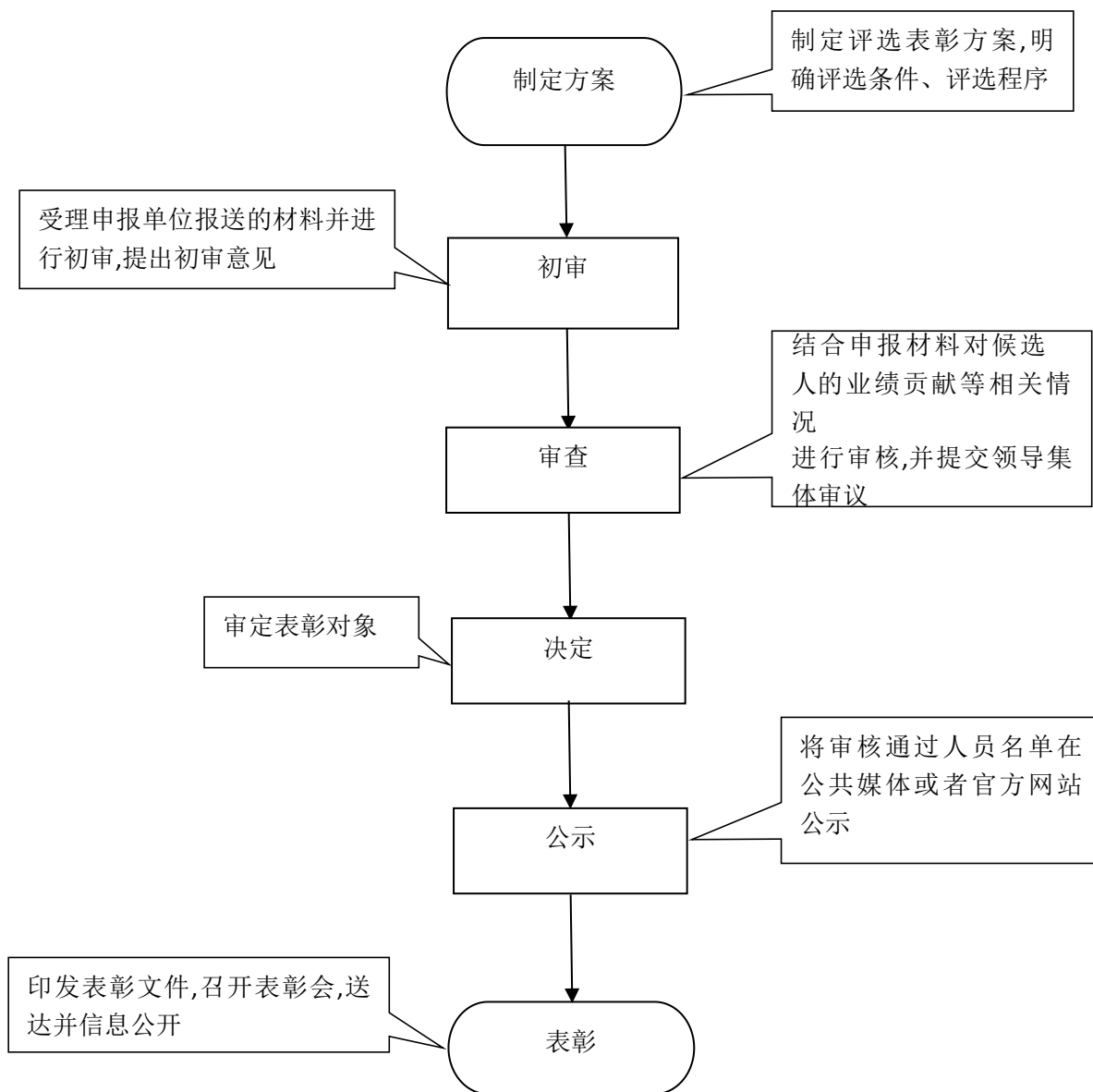
5、行政裁决类权力运行流程图（18-20）



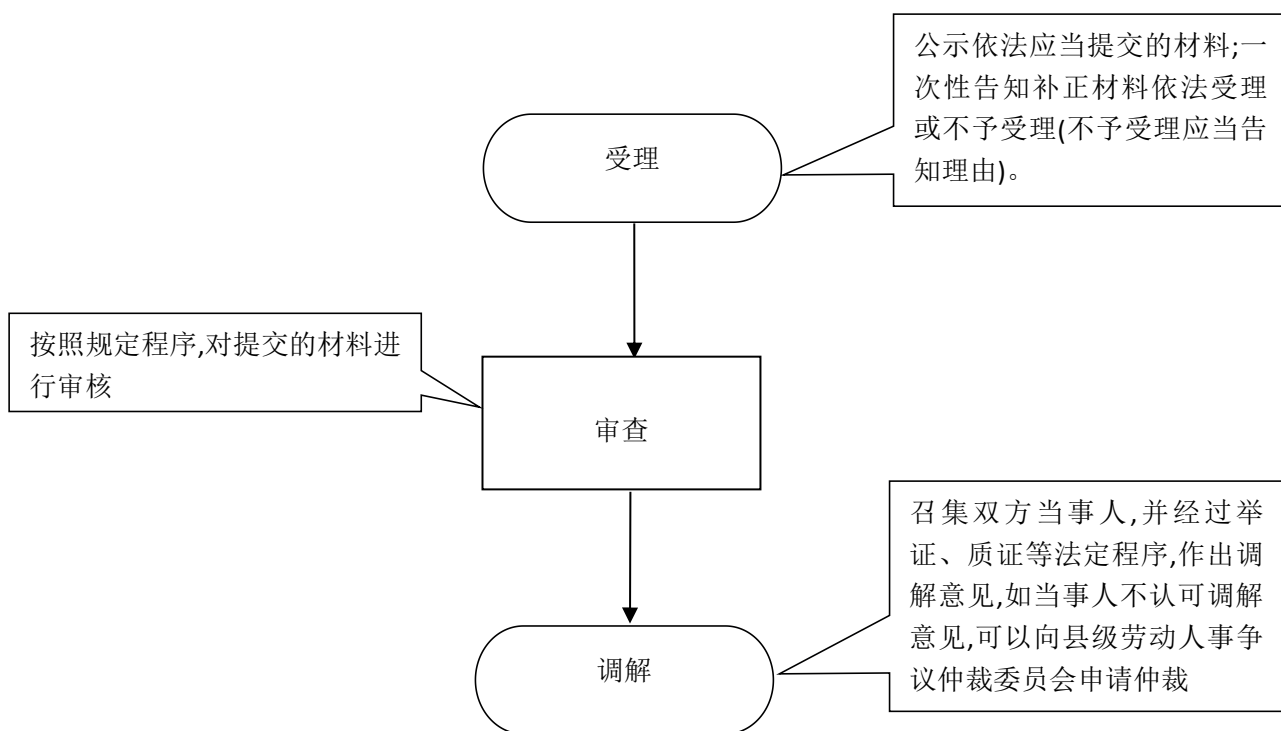
6、行政确认类行政权力运行流程图（21-26）



7、行政奖励类权力运行流程图（27-34）

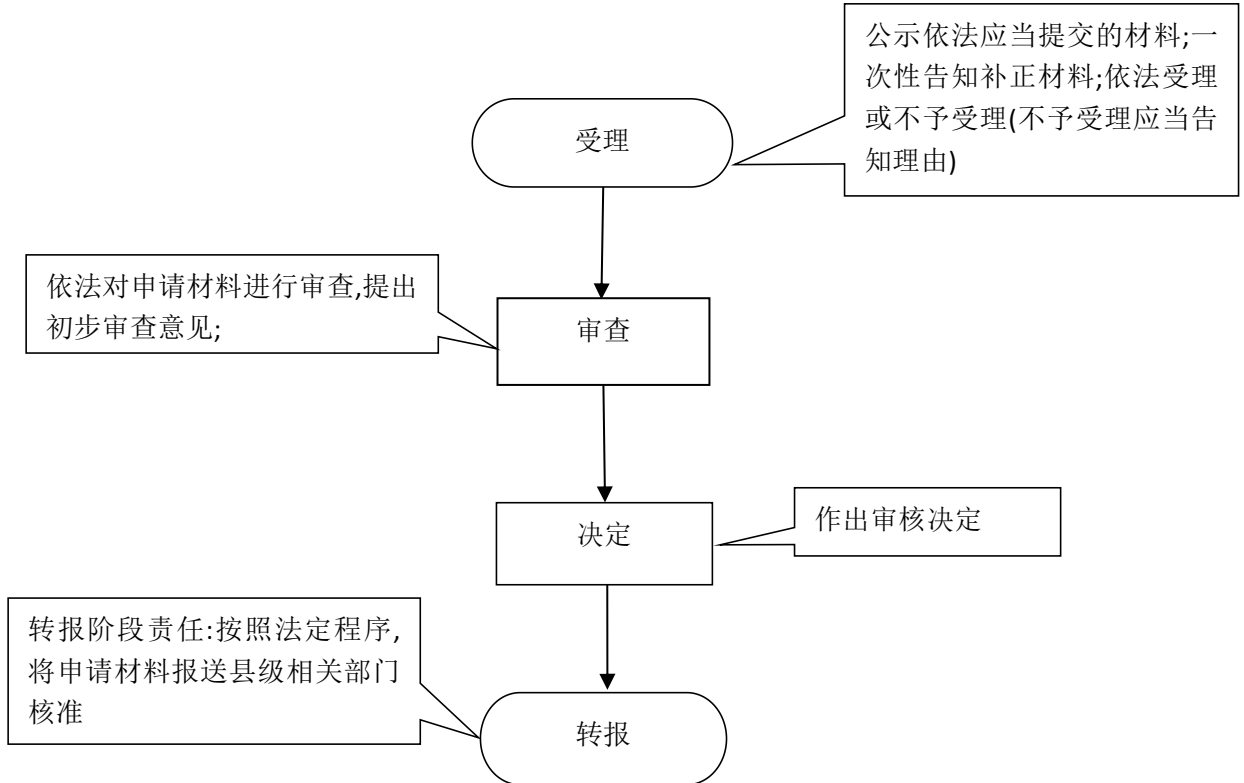


8、行政调解类权力运行流程图（35-39）

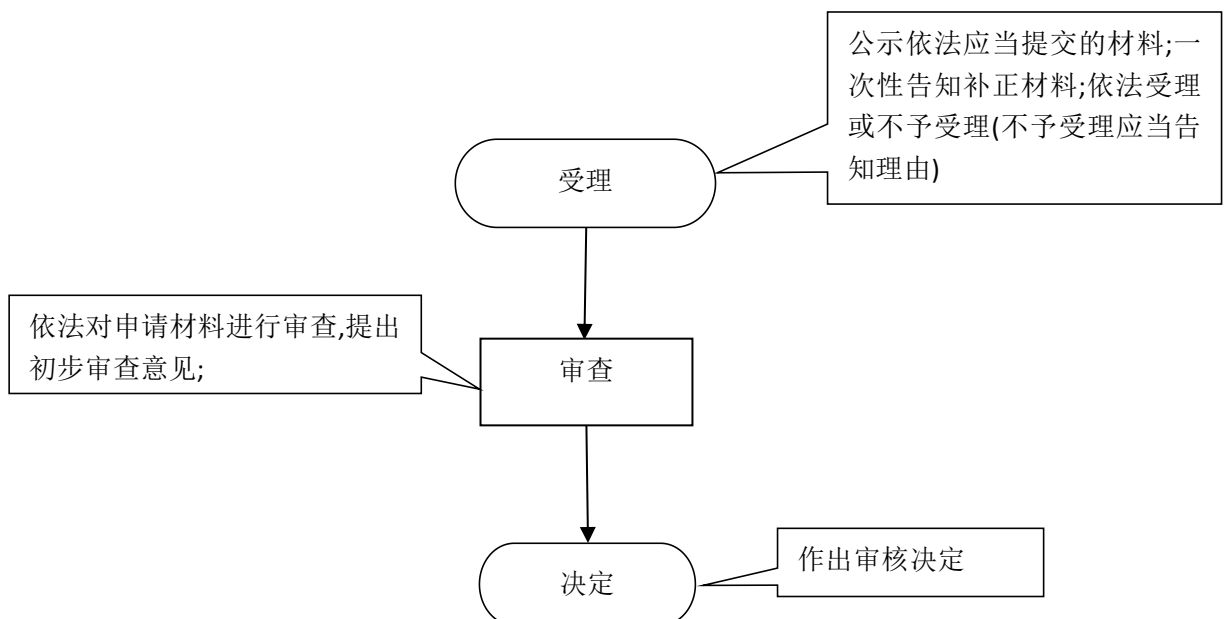


9、其他类行政权力运行流程图

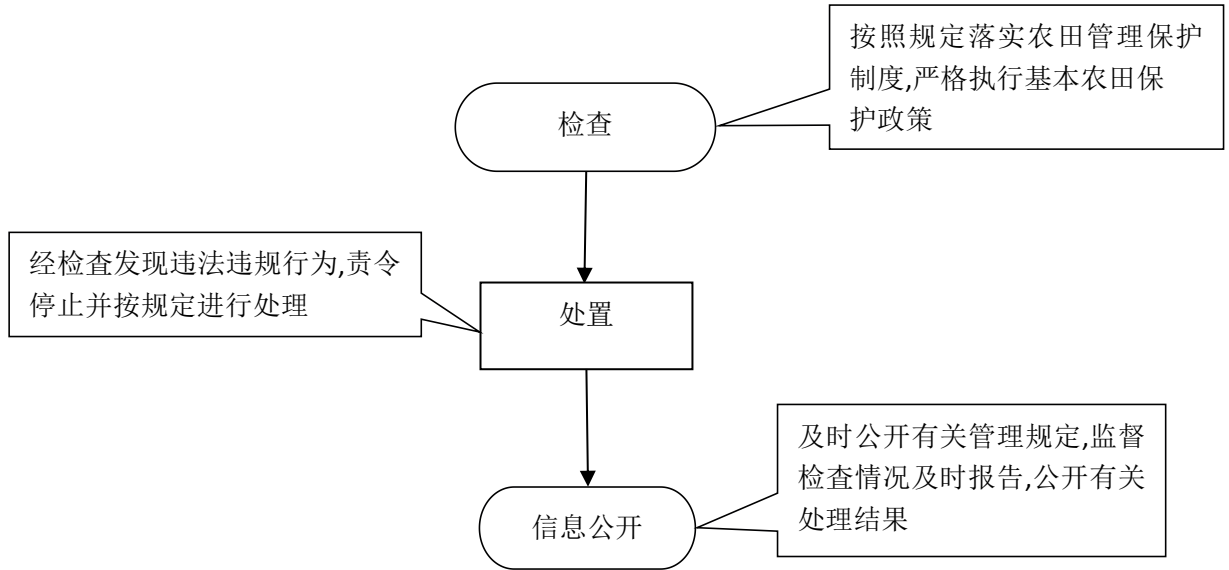
(40-45、48-49、53、55、56、59、60)



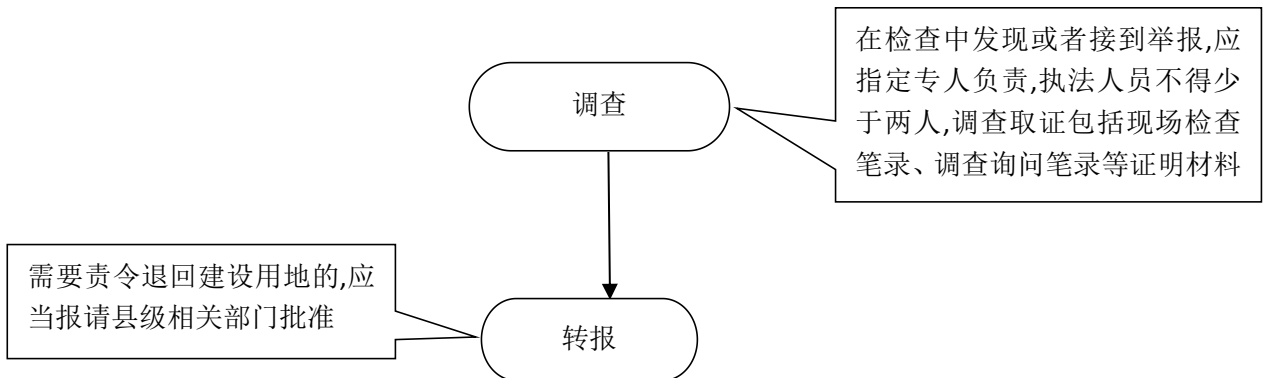
(46-47、50-52、54、57、58、61、118、119)



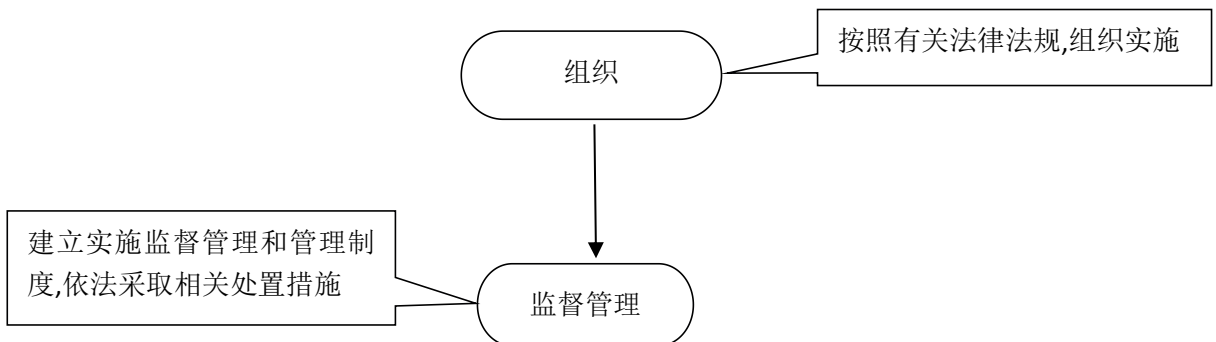
(62-63、65、69-70、72)



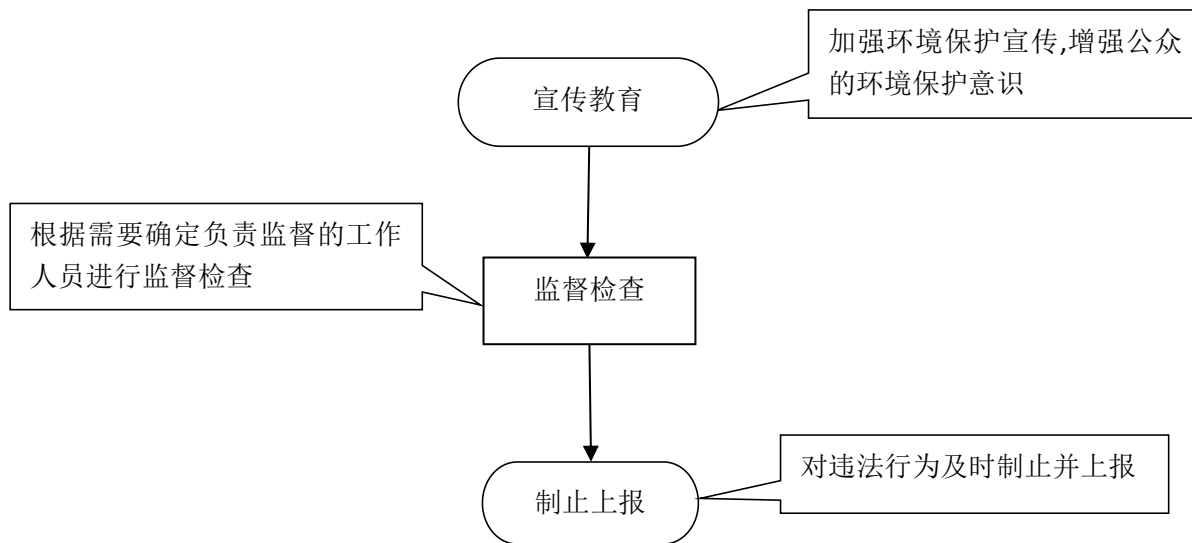
(64)



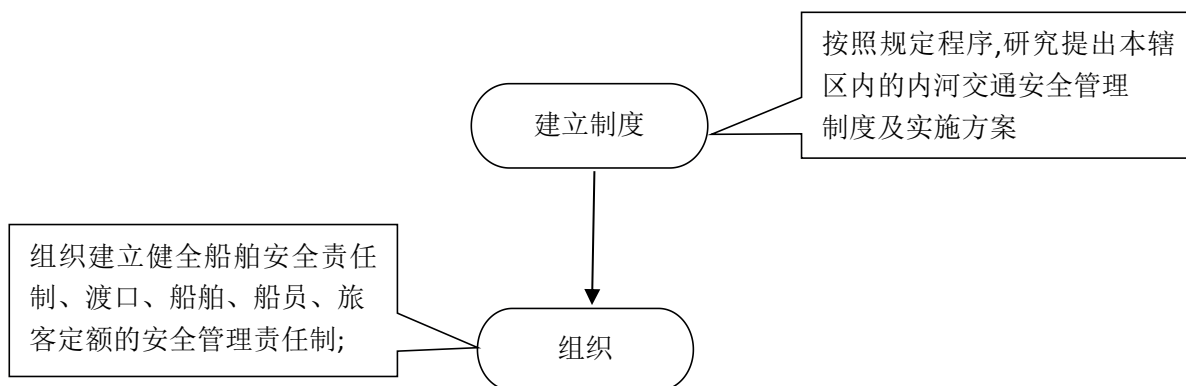
(66、71、95、100、105)



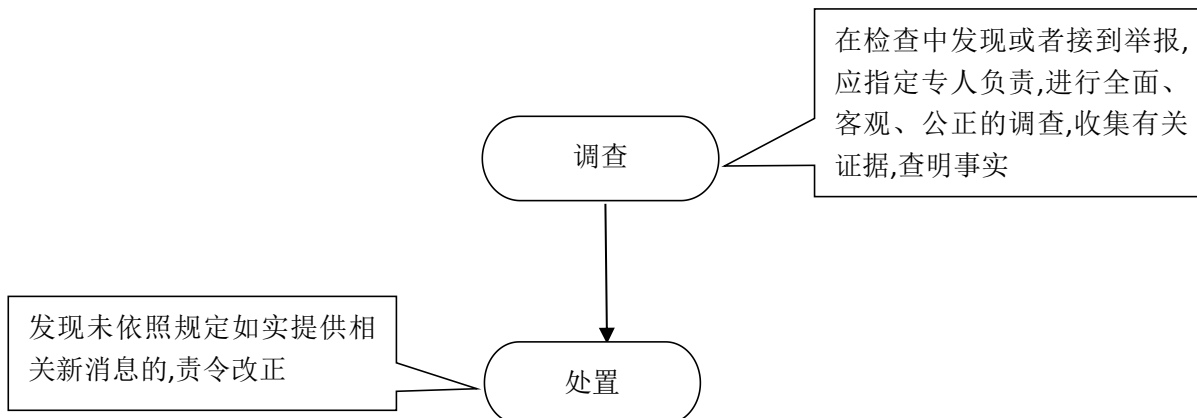
(67-68)



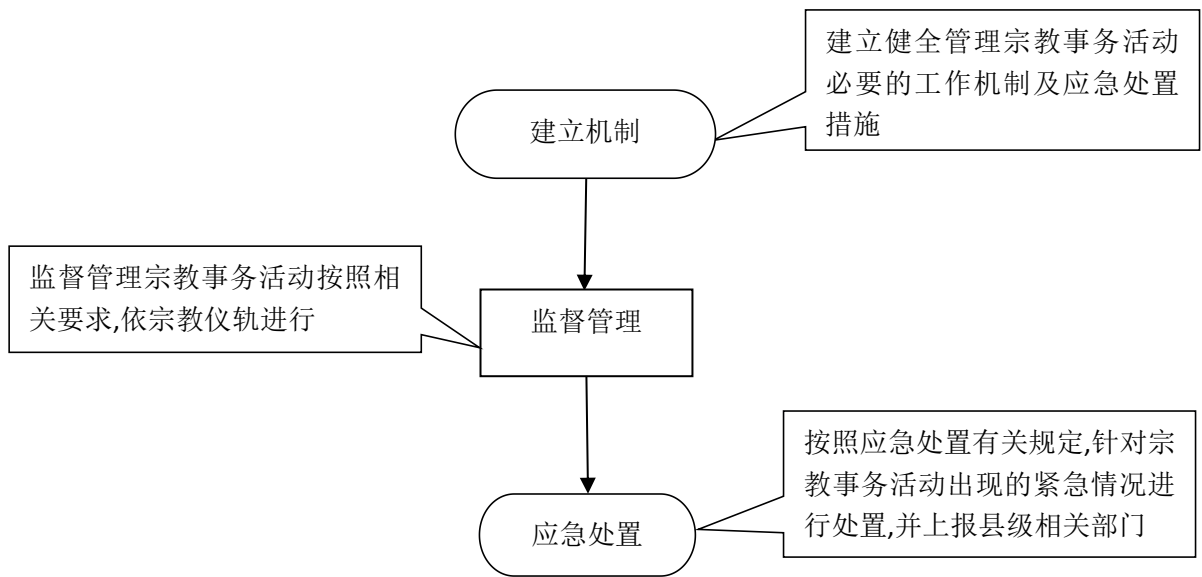
(73)



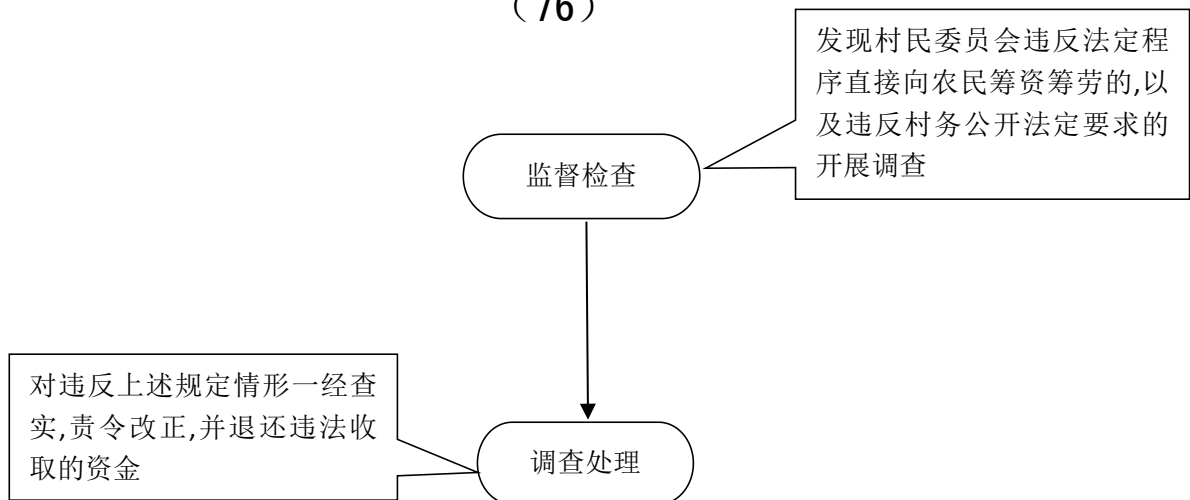
(74、77-80)



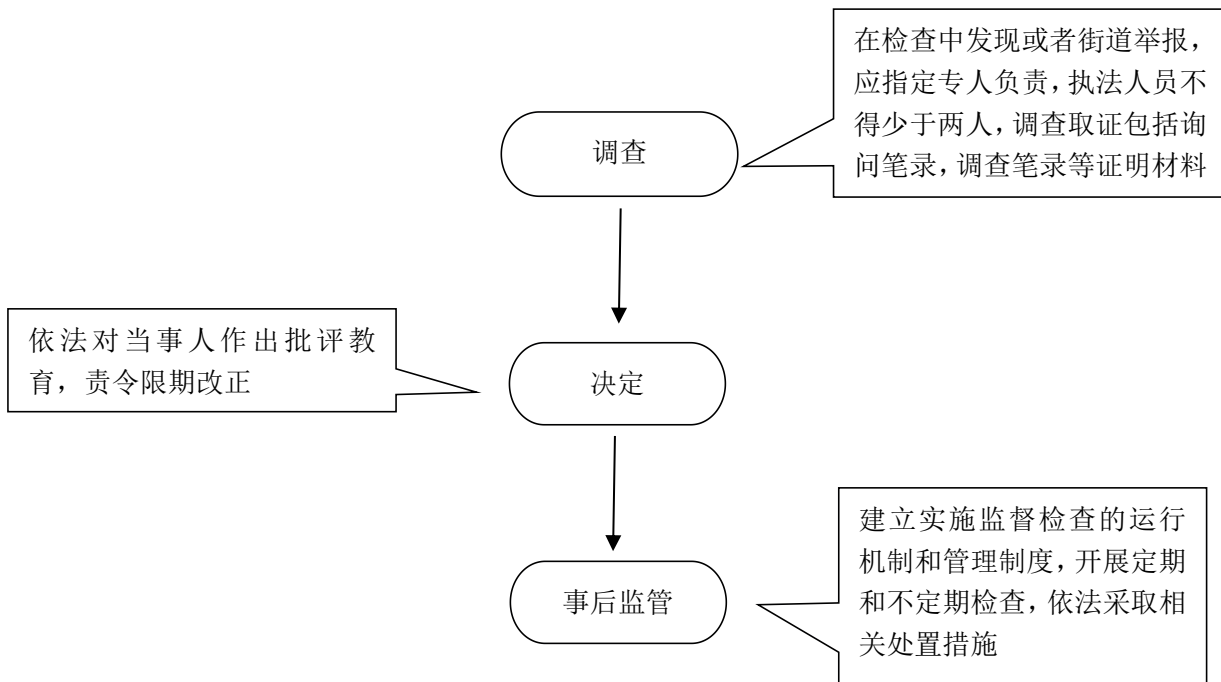
(75)



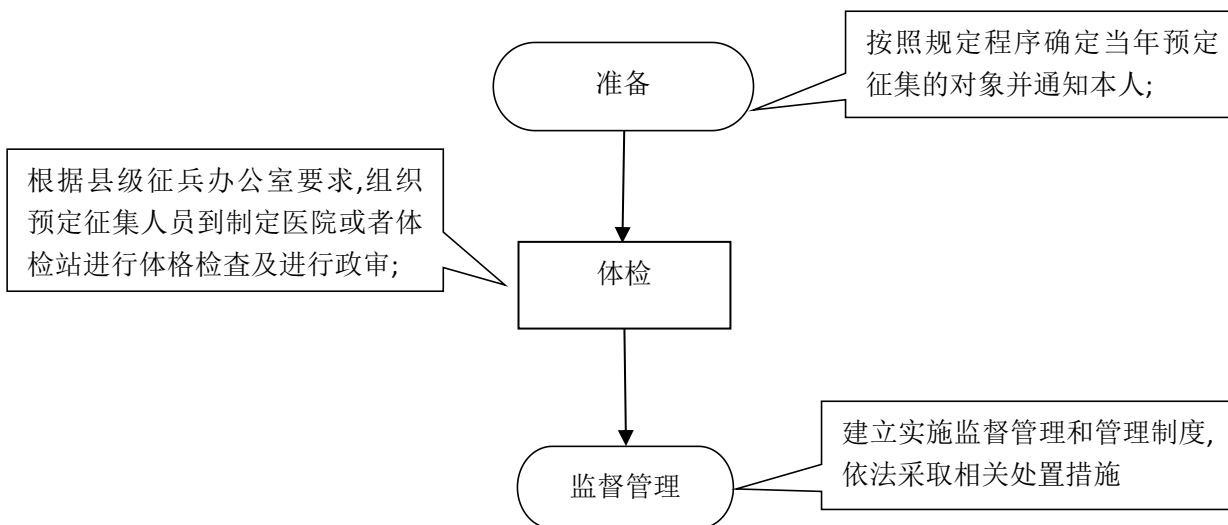
(76)



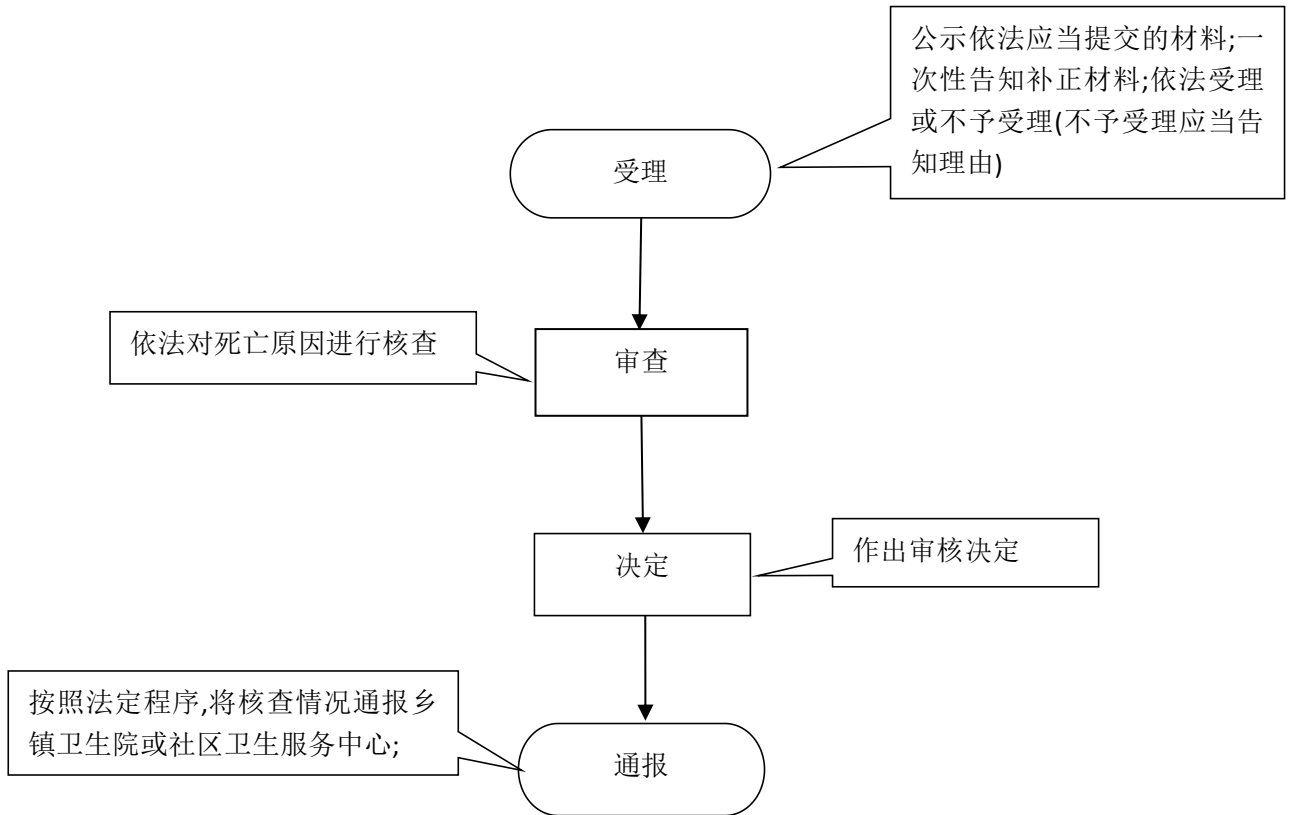
(81-82)



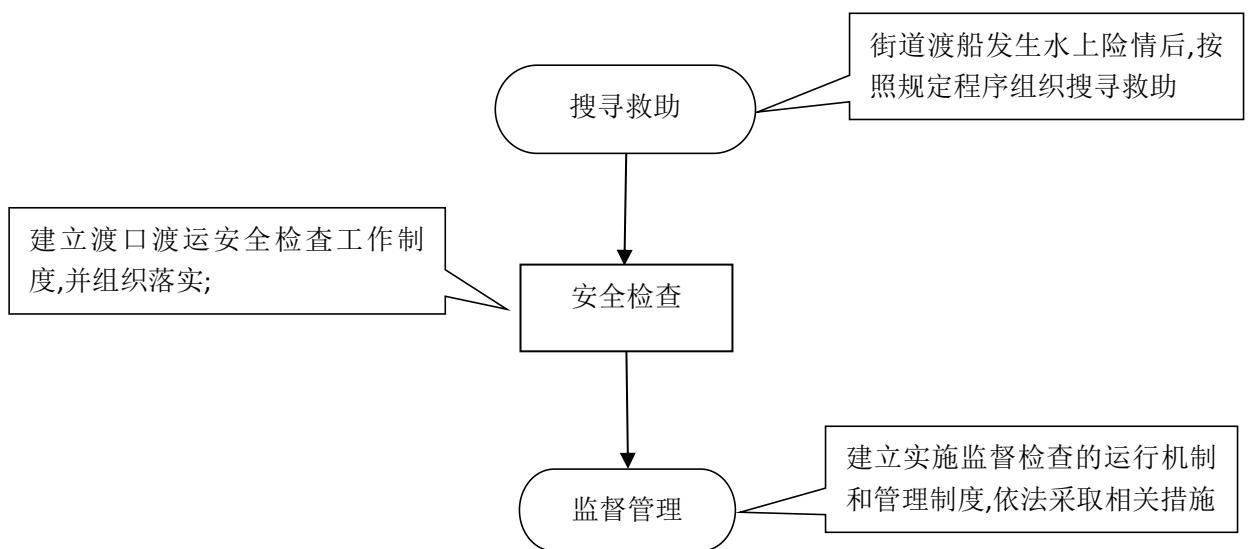
(83)



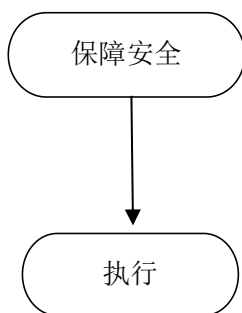
(84)



(85)

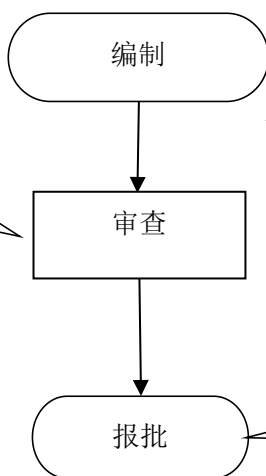


(86)



依法维护学校周边秩序,保护学生、教师、学校的合法权益,为学校提供安全保障

(87-92)

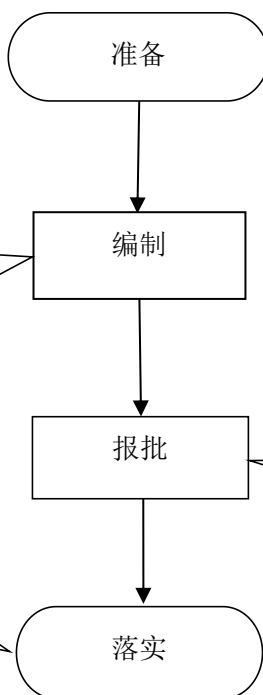


组织规划编制单位、有关部门等开展规划编制工作

组织专家、相关部门审查、依法征求相关部门意见

根据法定审批权限,上报县级人民政府批准,按规定进行信息公开

(93)



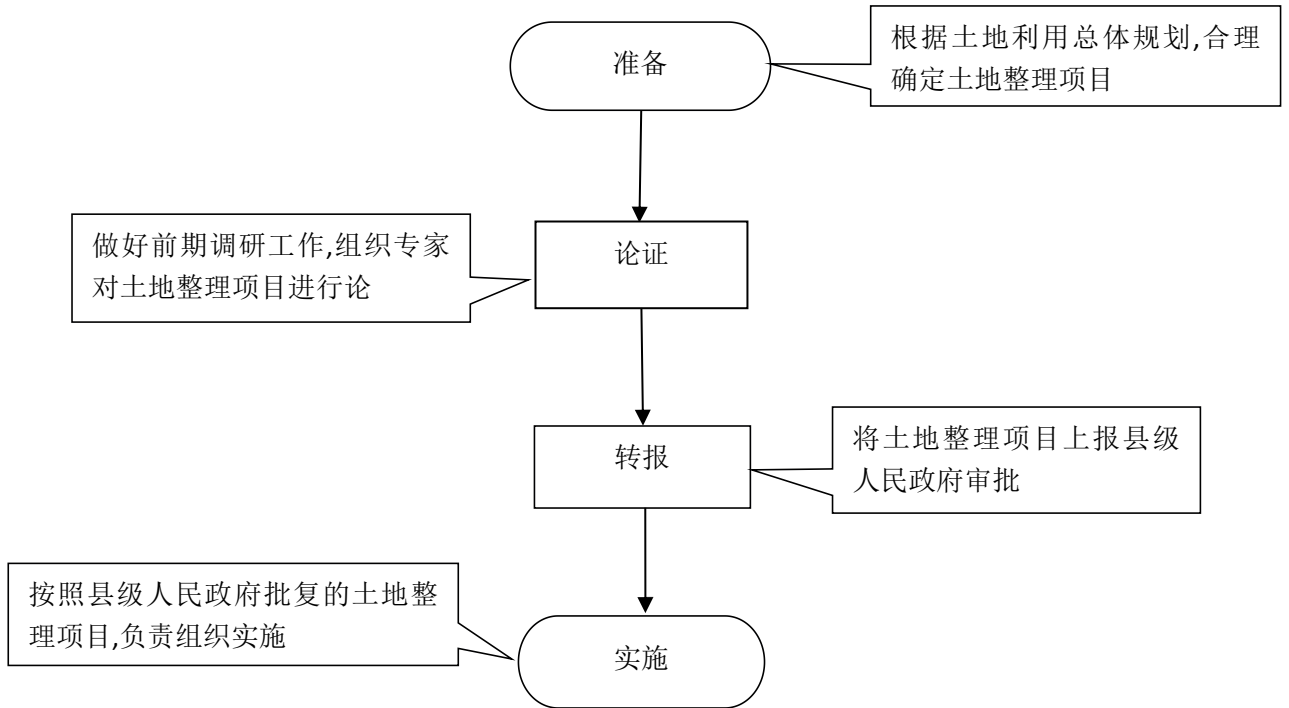
按照辖区经济社会发展,提出乡道规划及乡道规划修改意见

组织专门人员编制本辖区乡道发展规划,公示并征求意见,会同相关部门、专家进行审议

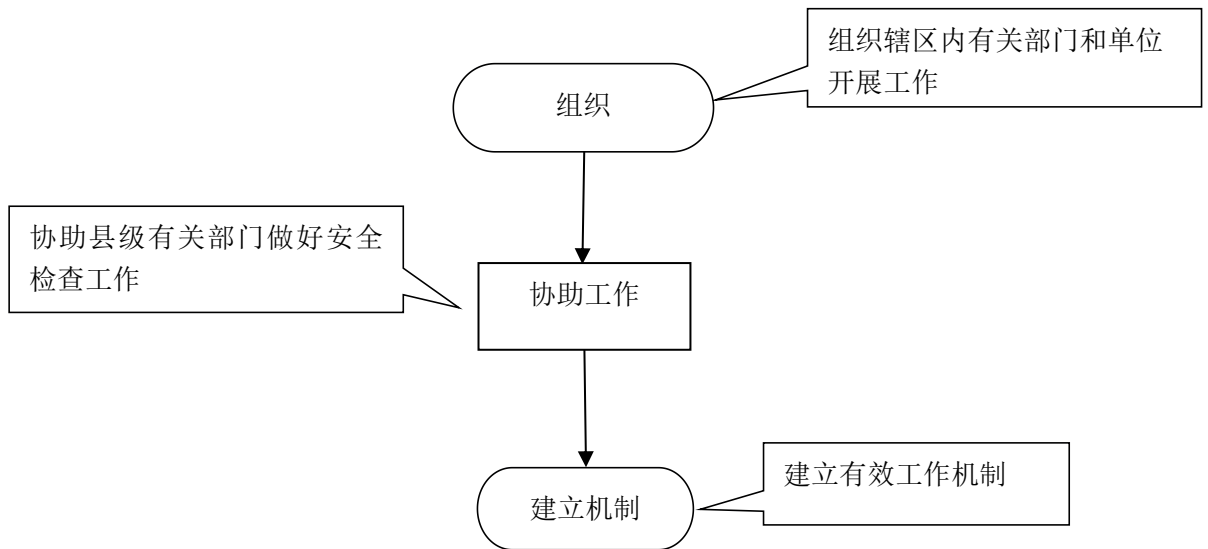
形成本辖区乡道发展规划并上报县级人民政府批准;

按照规划制定年度实施计划,需要修订完善的按程序上

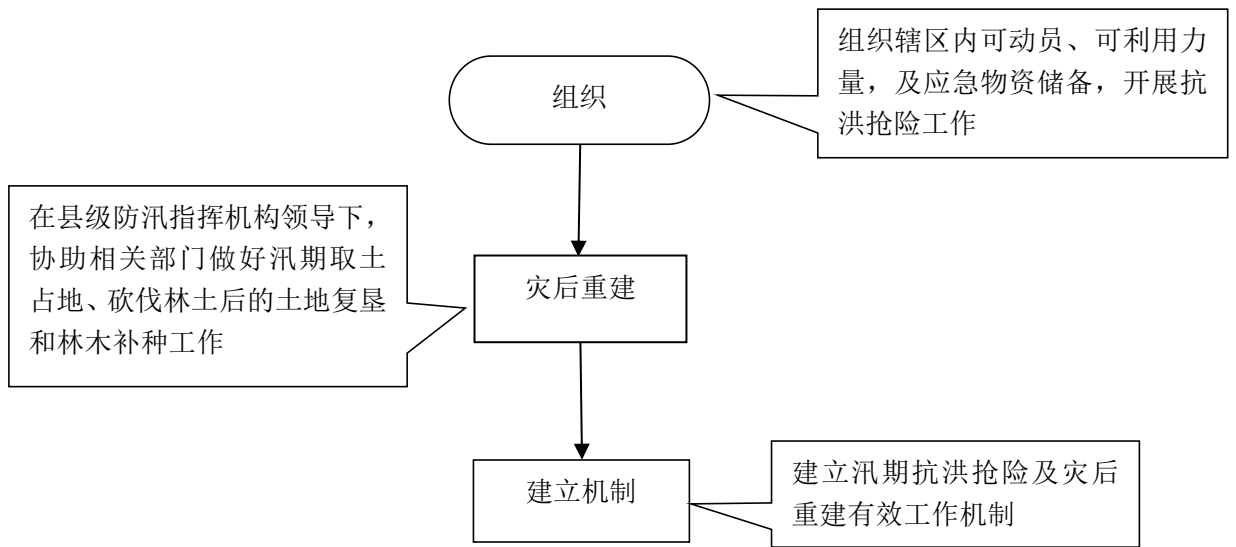
(94)



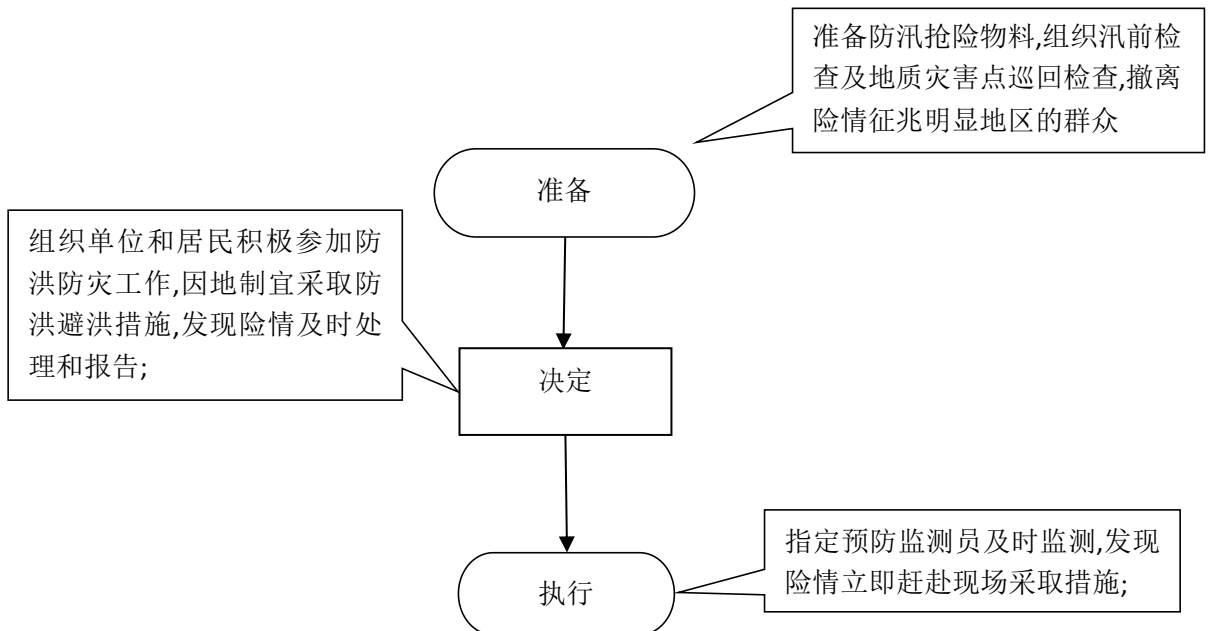
(96、98)



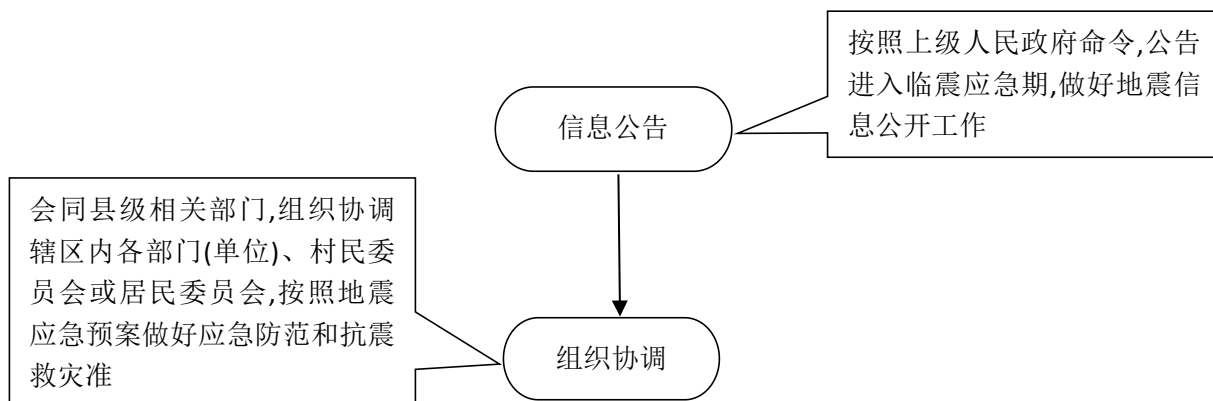
(97)



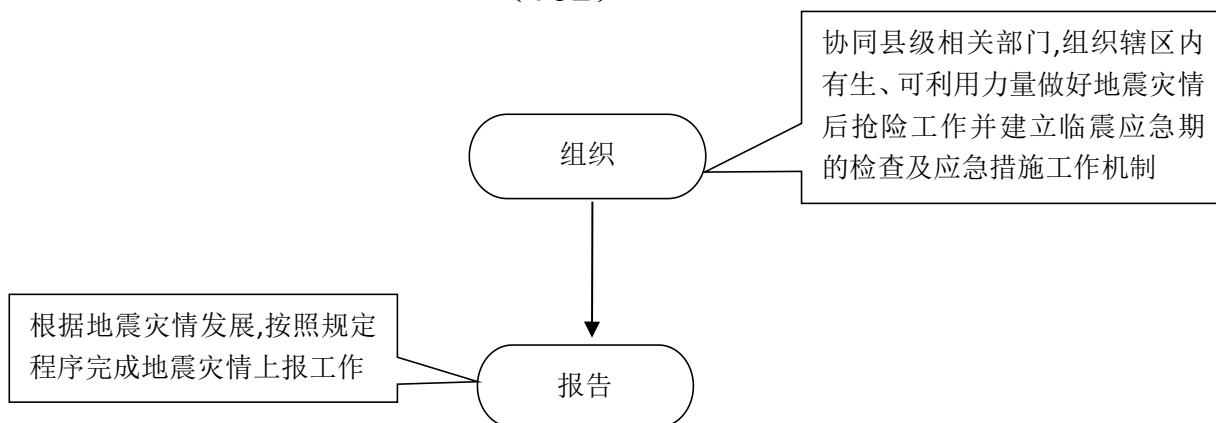
(99)



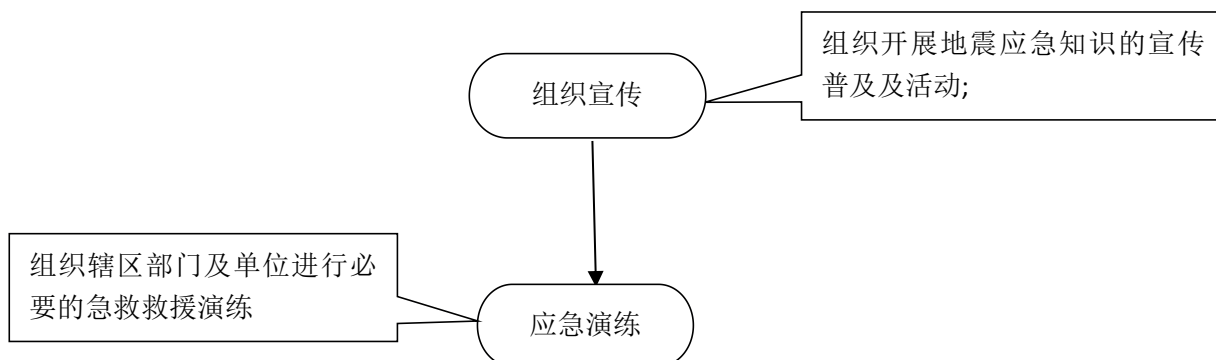
(101)



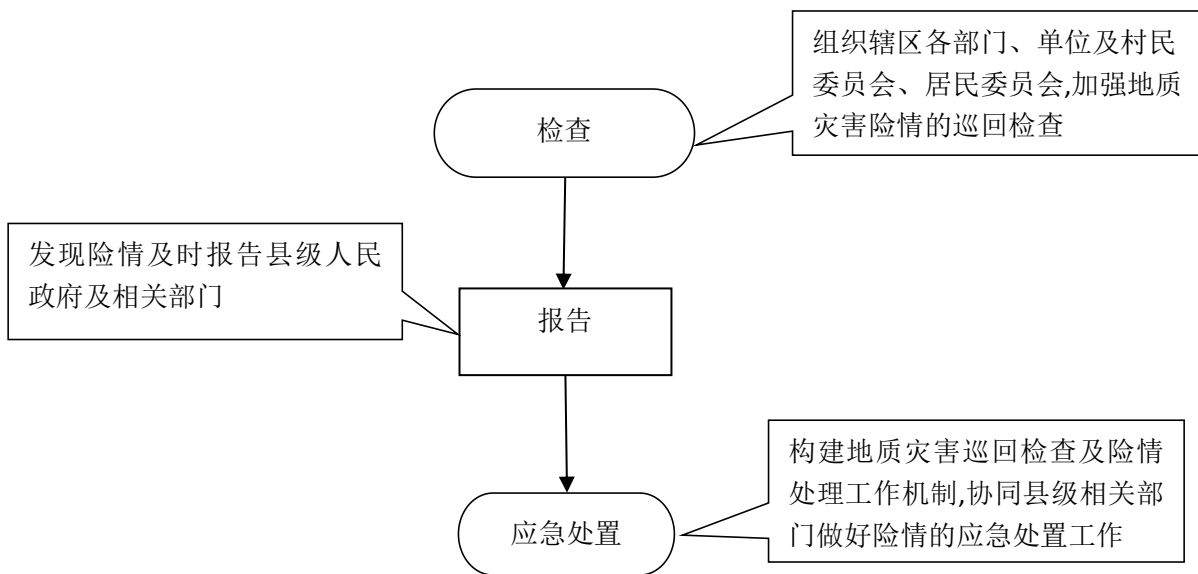
(102)



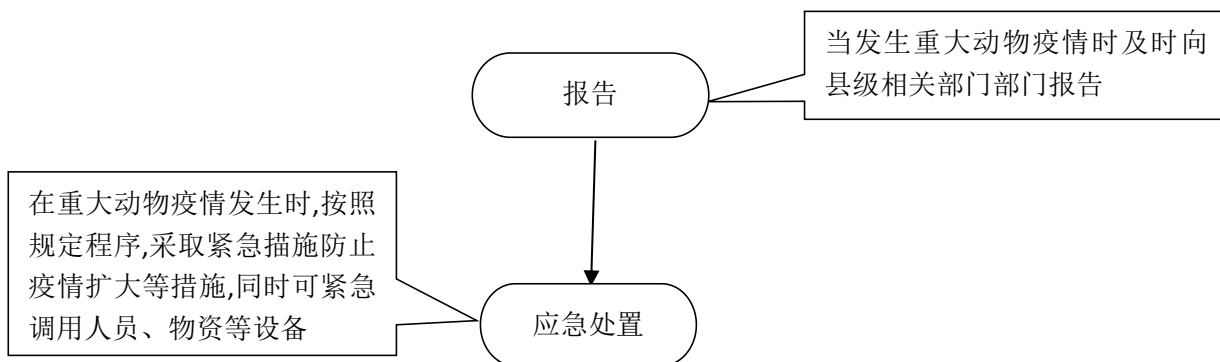
(103)



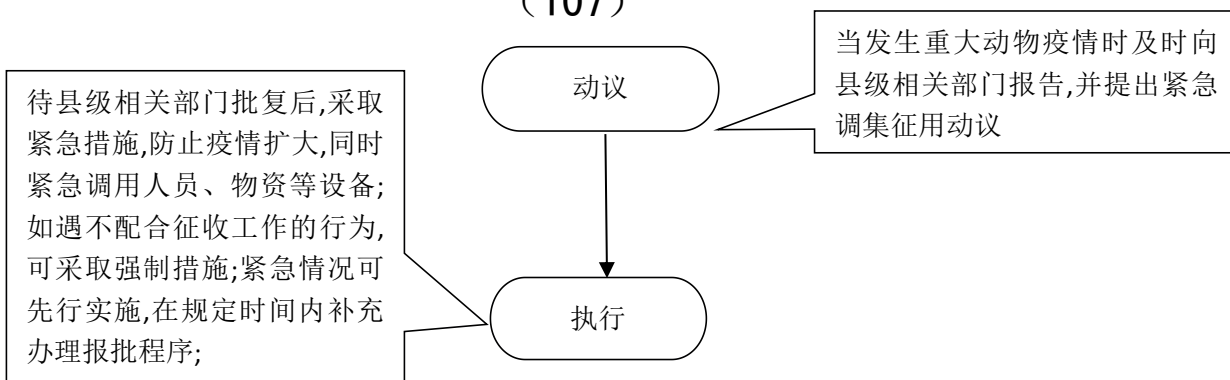
(104)



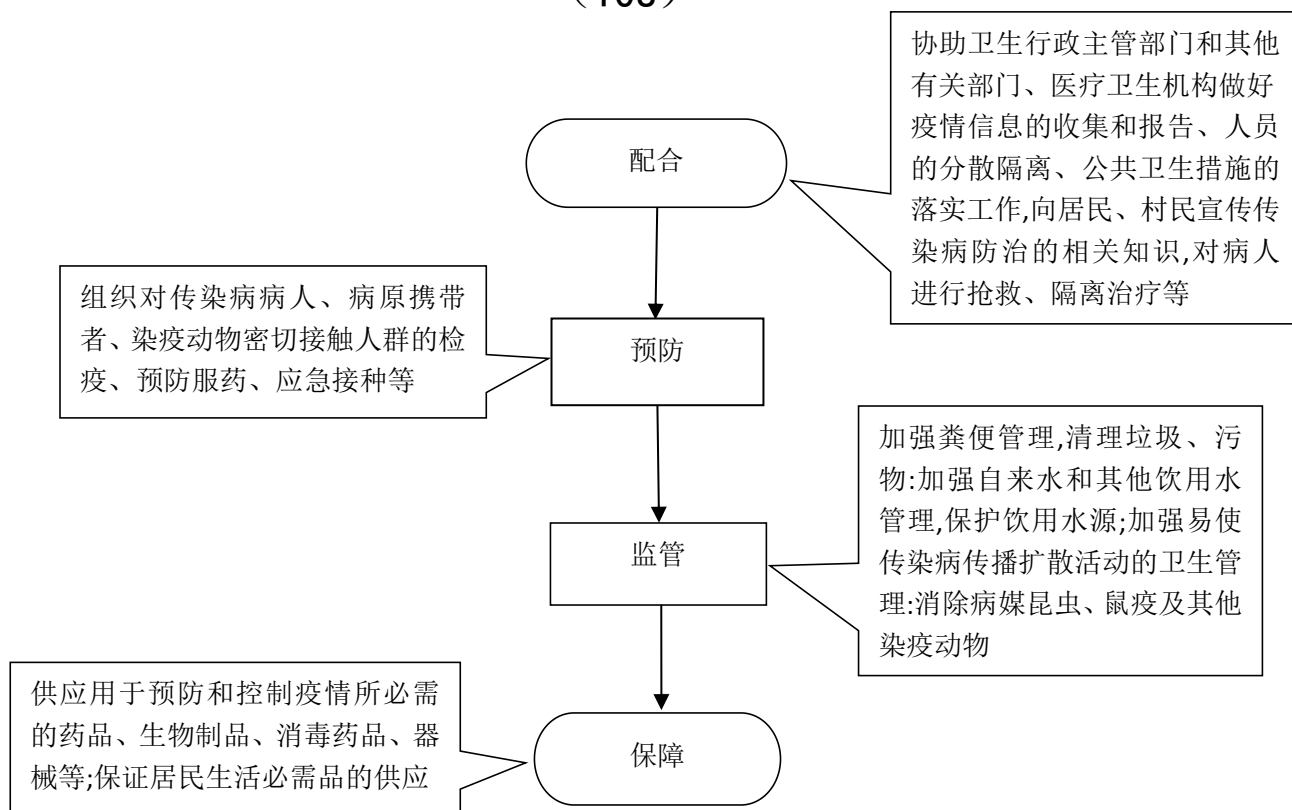
(106)



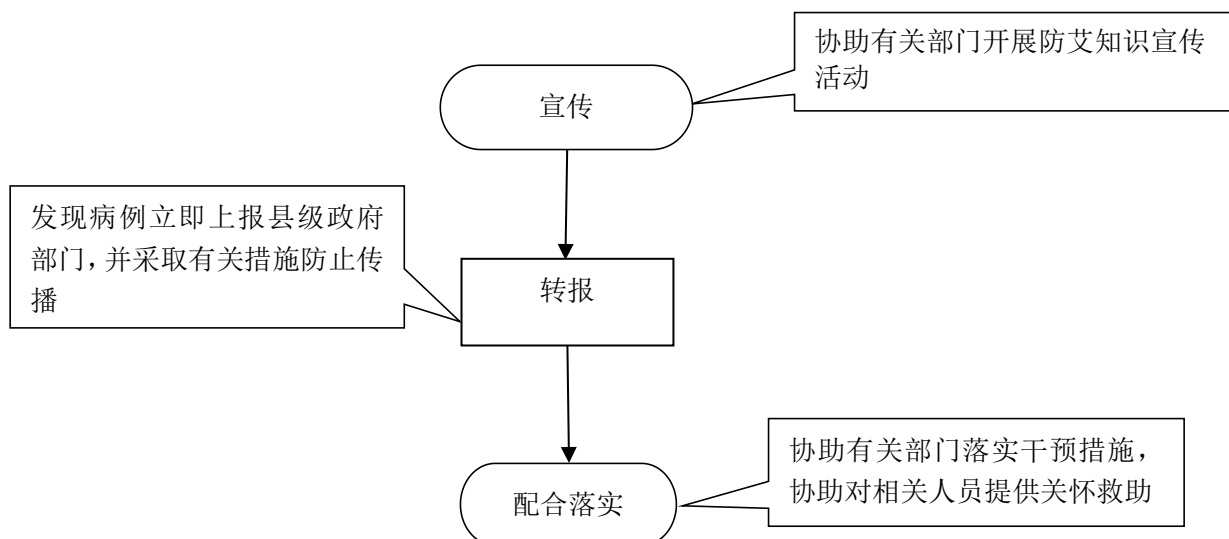
(107)



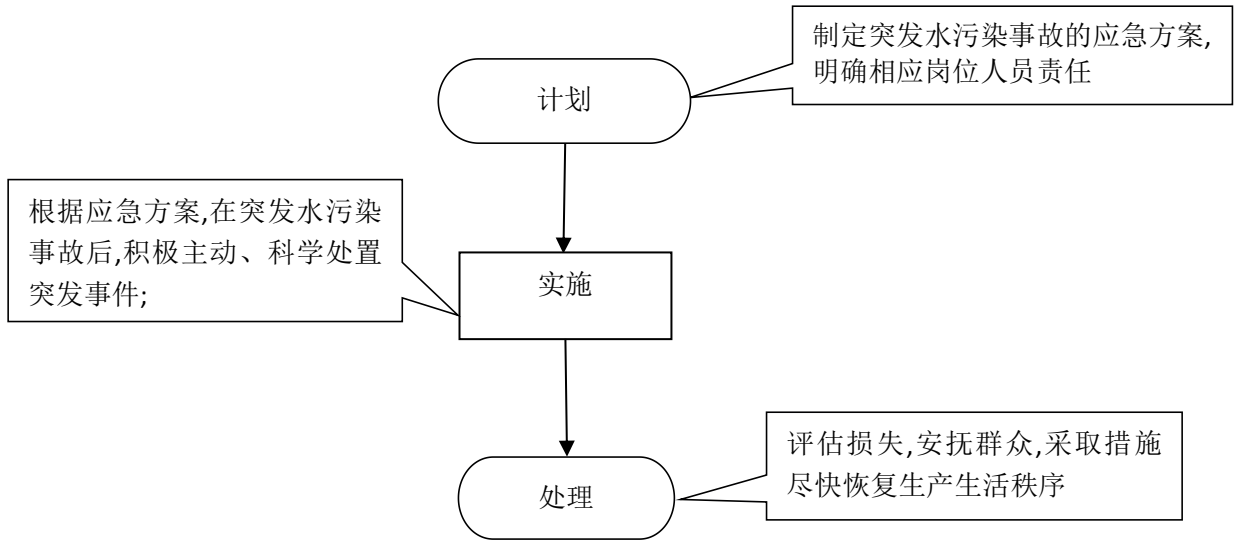
(108)



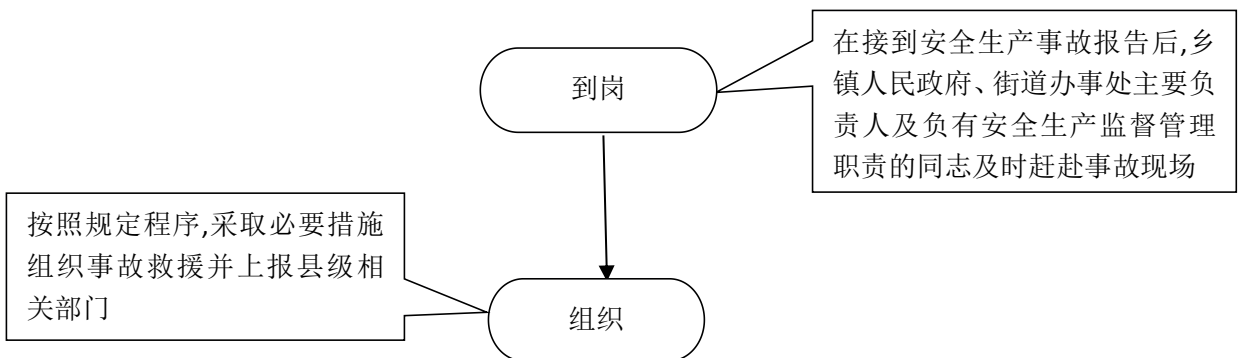
(109)



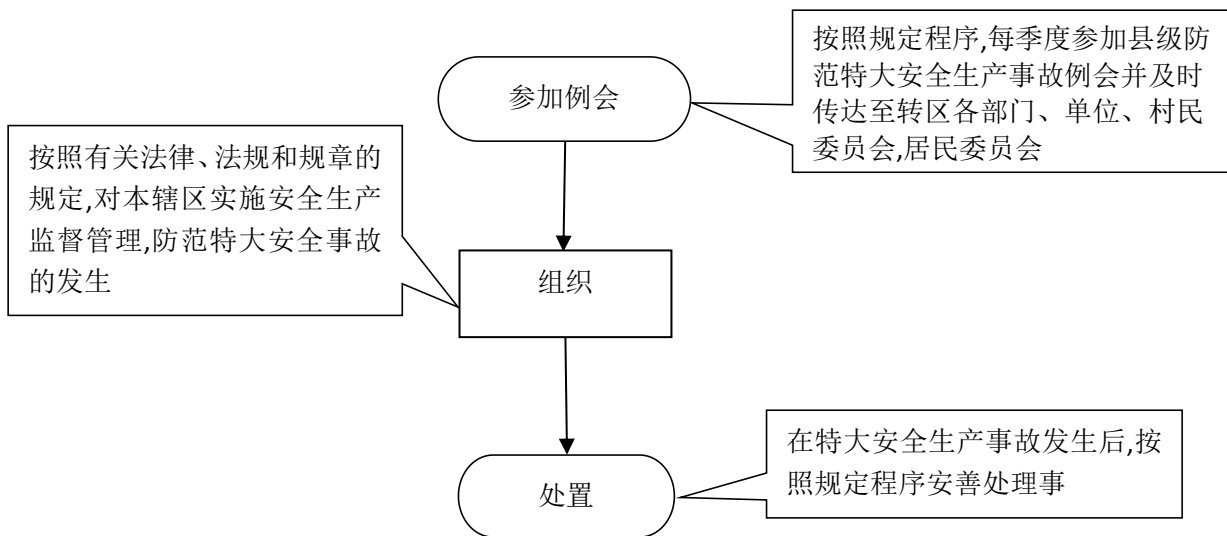
(110)



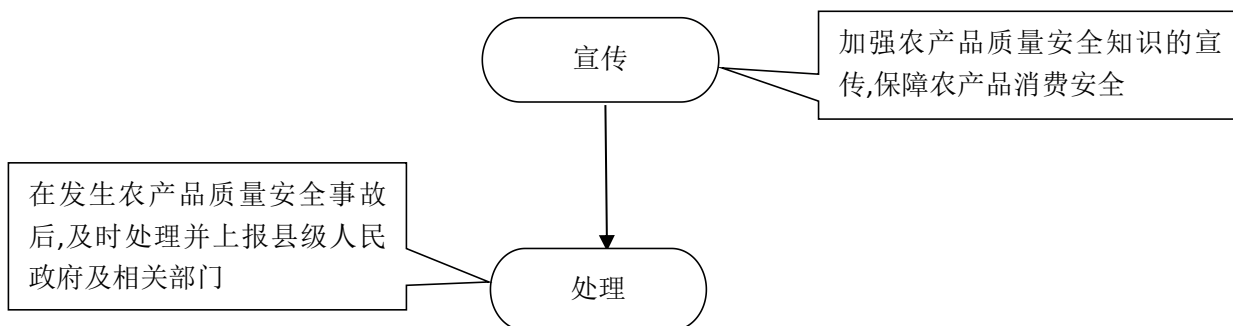
(111)



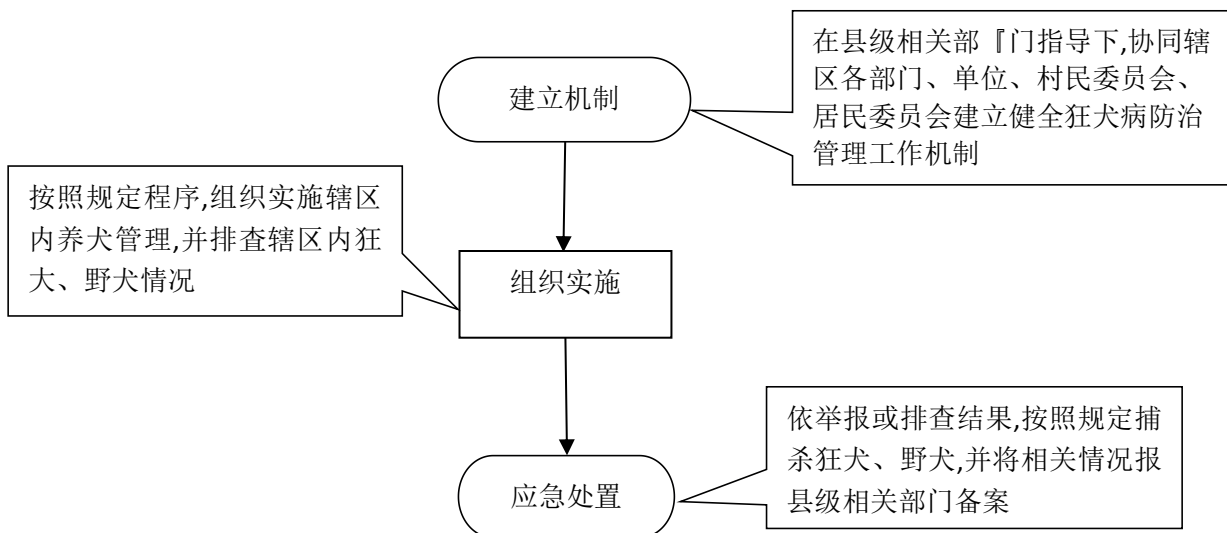
(112)



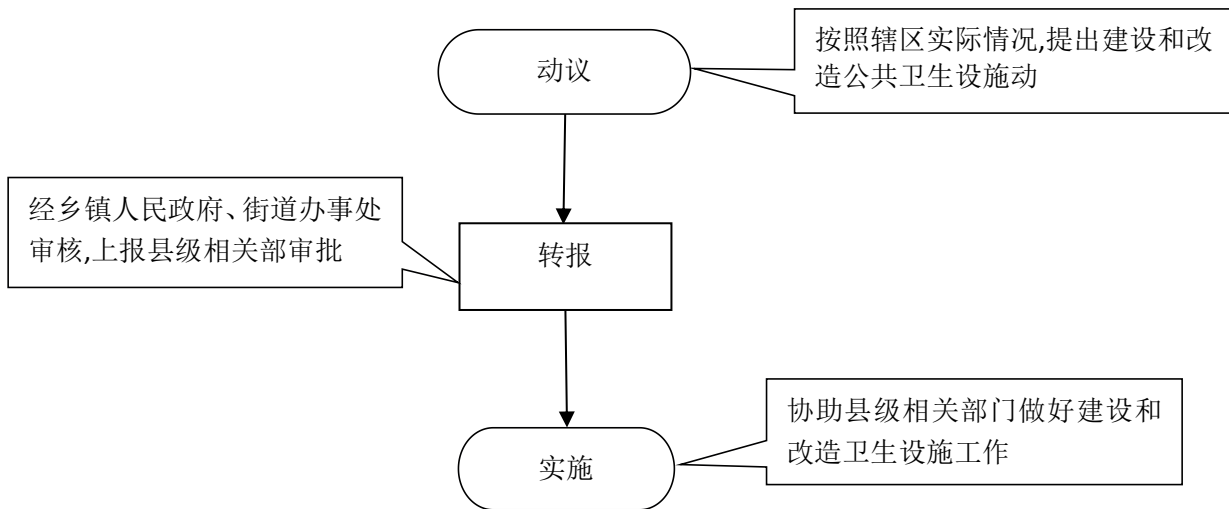
(113)



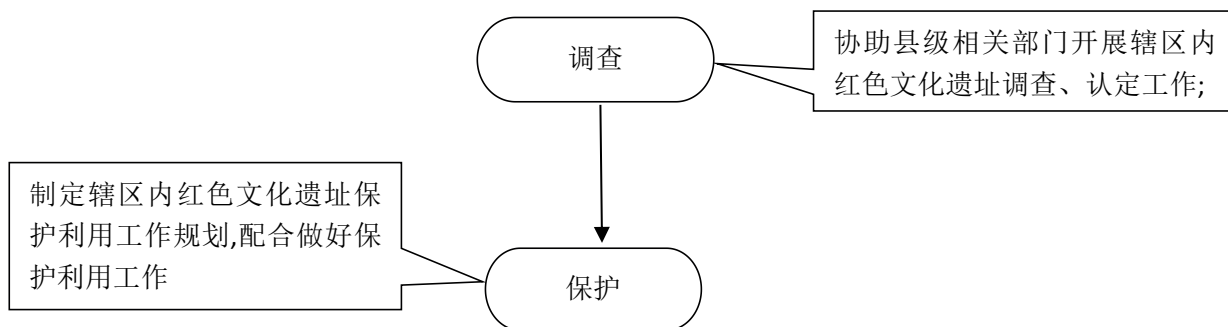
(114)



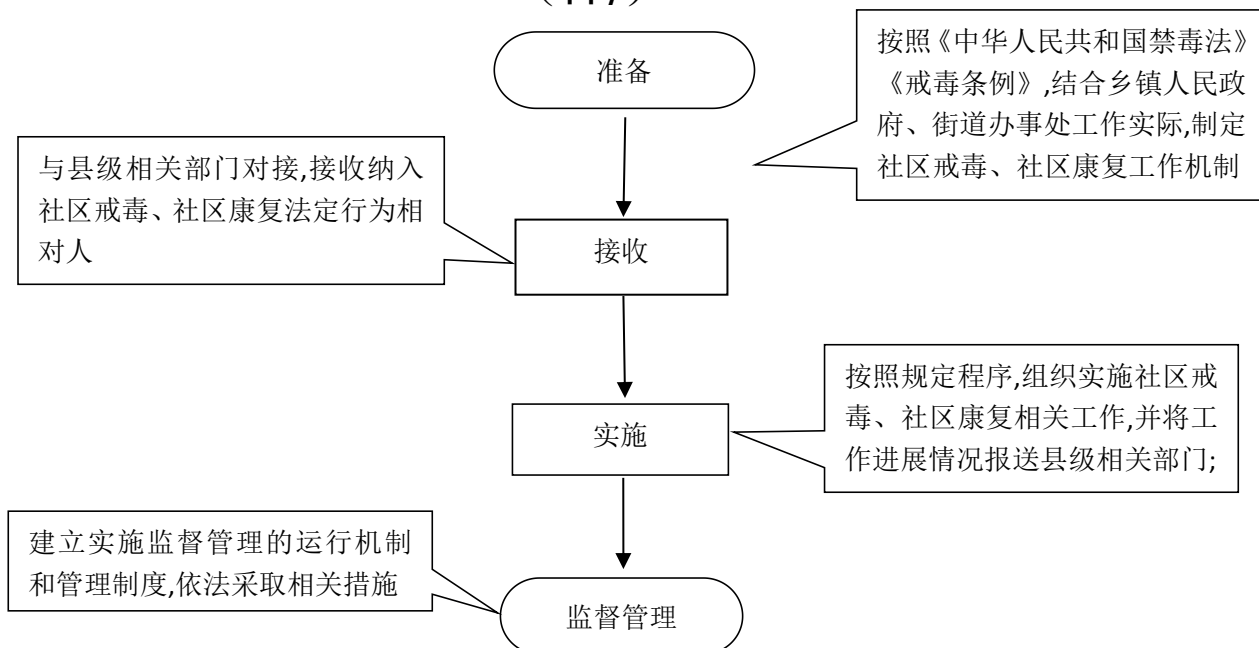
(115)



(116)

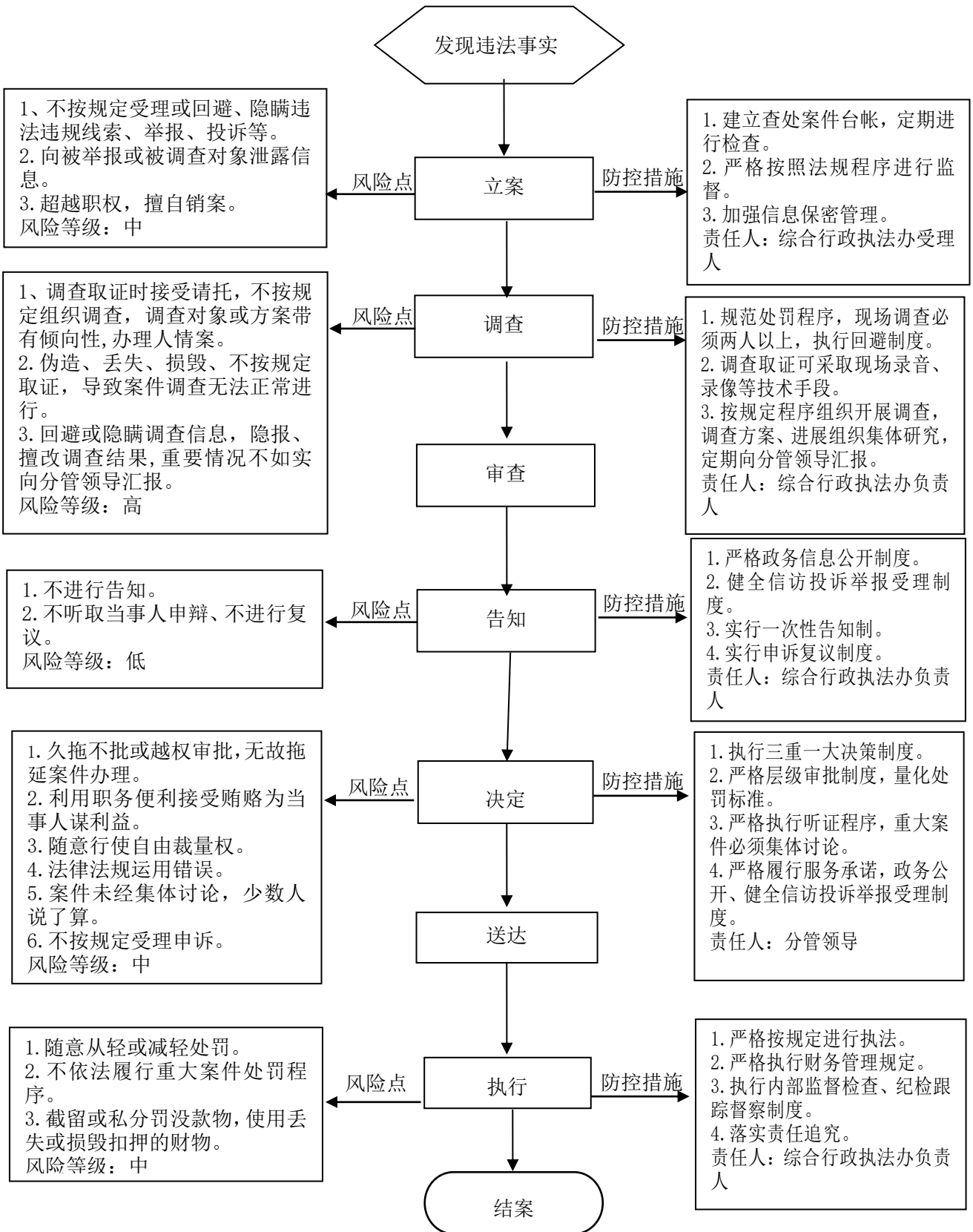


(117)

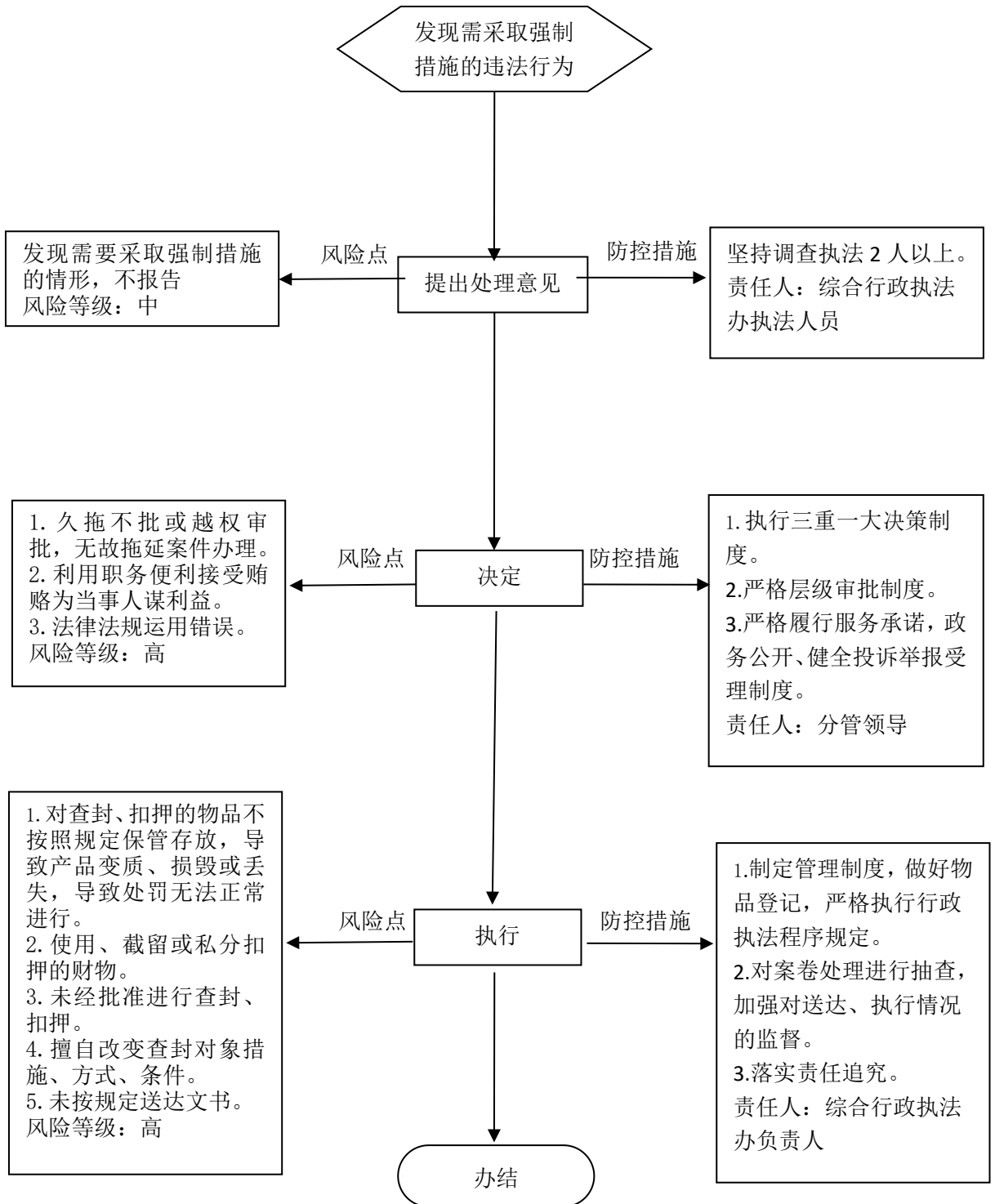


孝义市乡镇（街道）行政职权廉政风险防控图

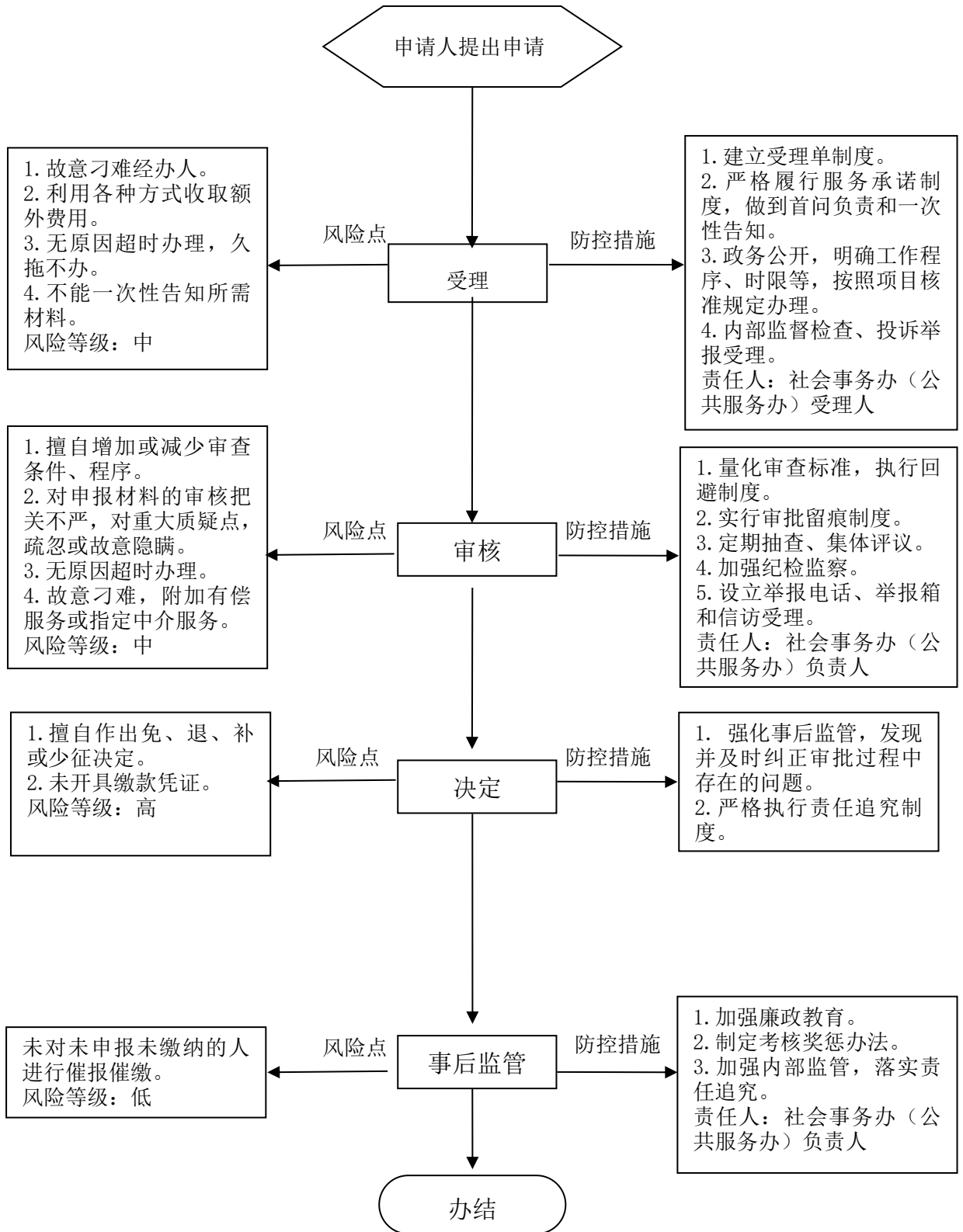
1、行政处罚类



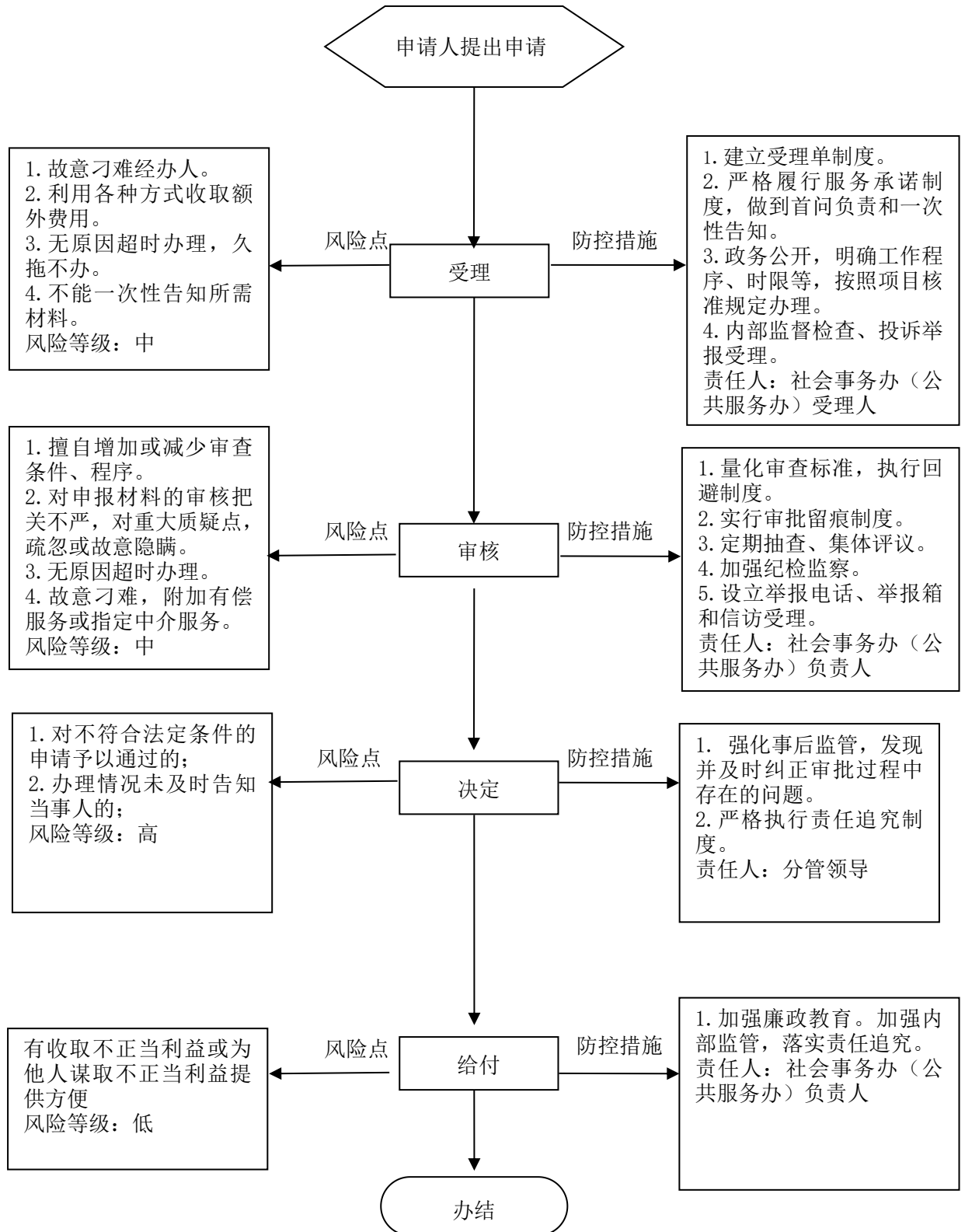
2、行政强制类



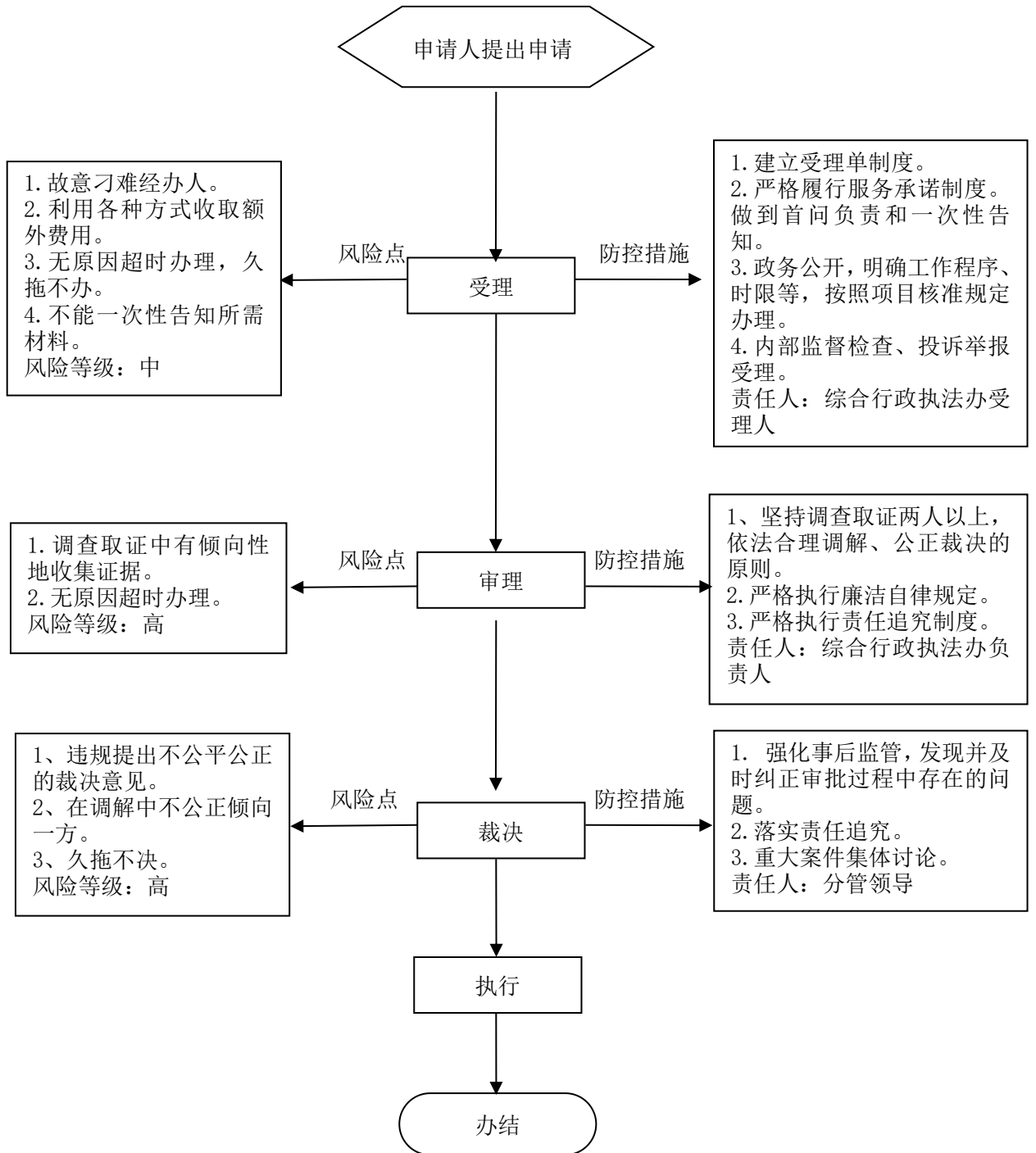
3、行政征收类



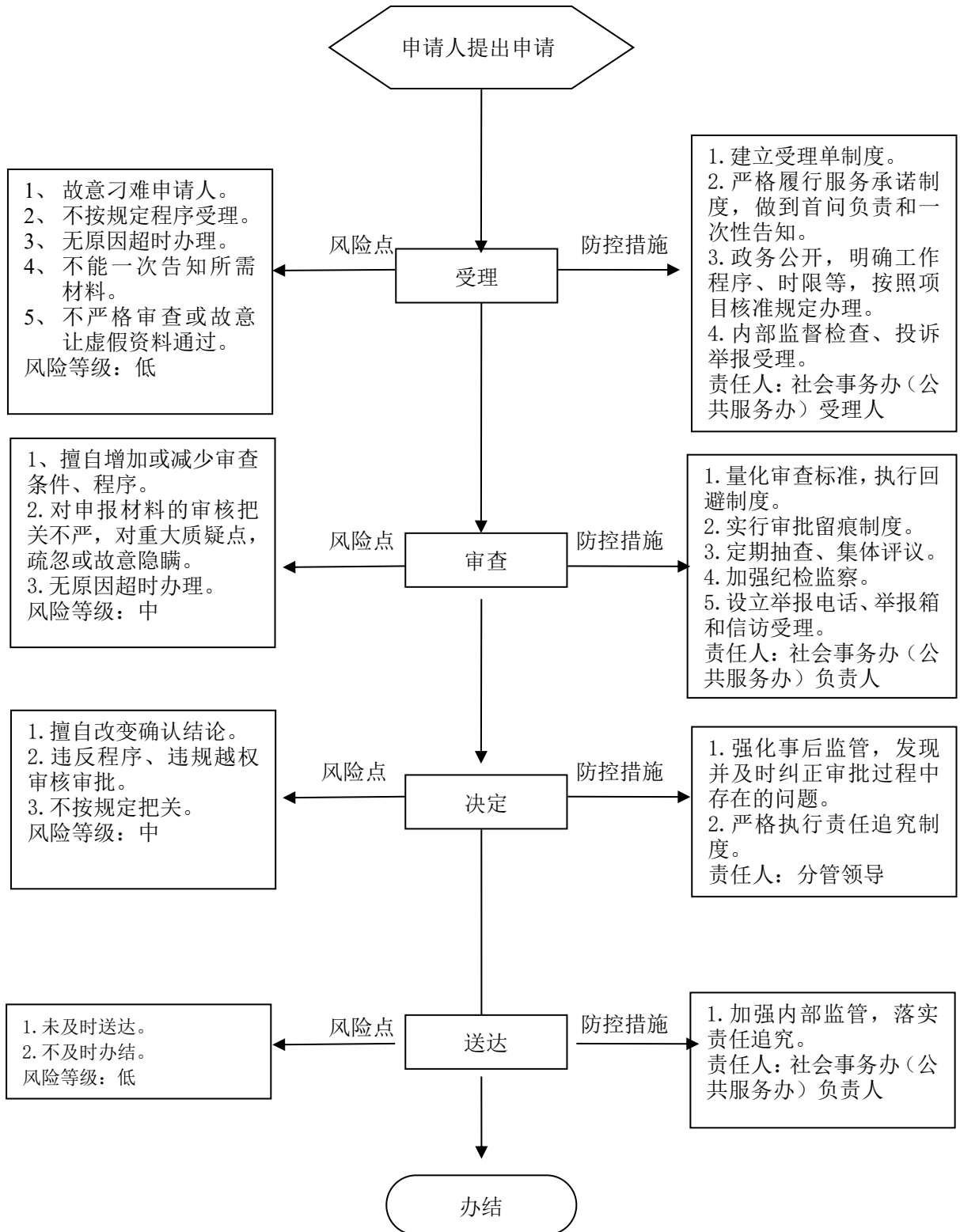
4、行政给付类



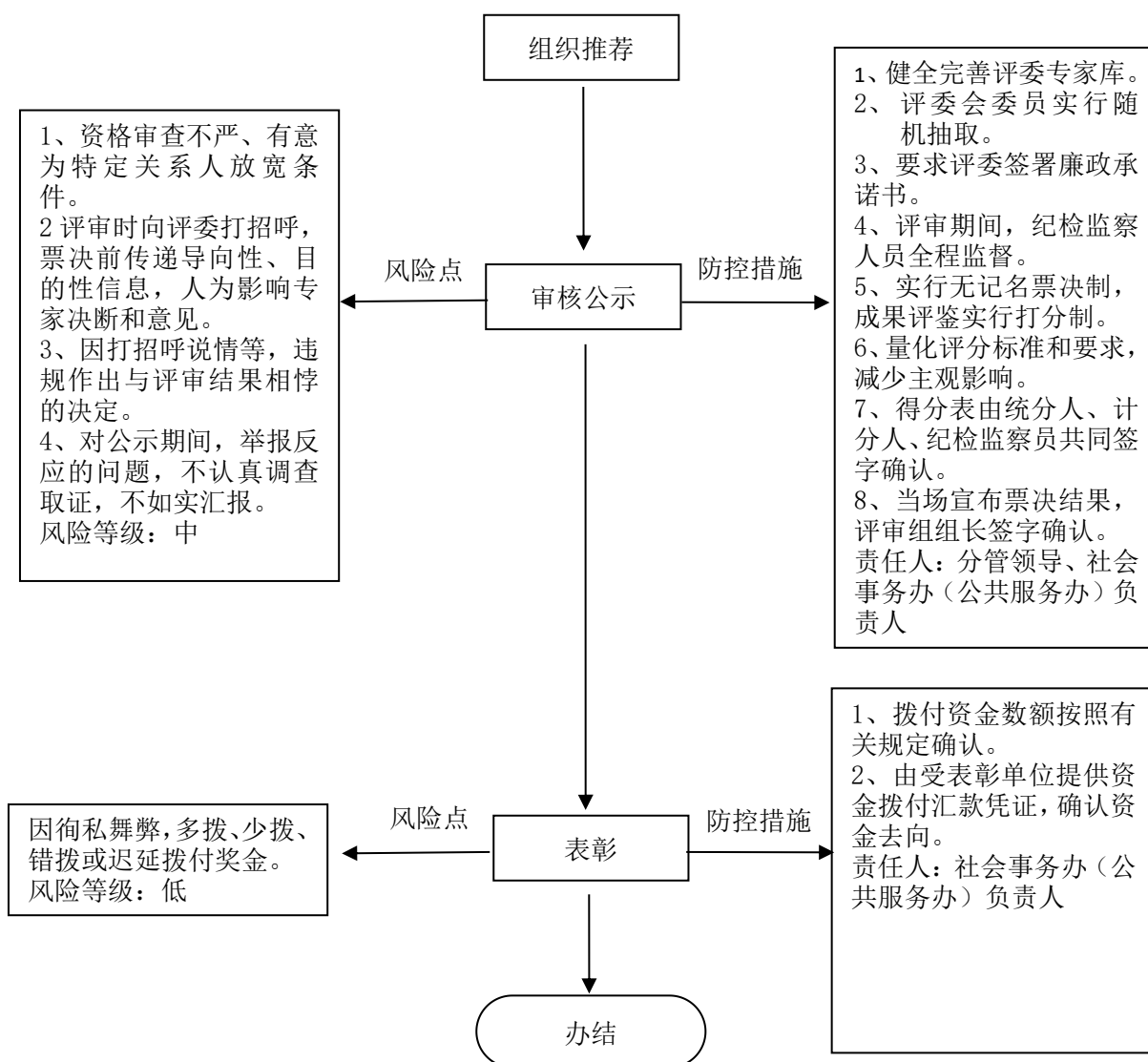
5、行政裁决类



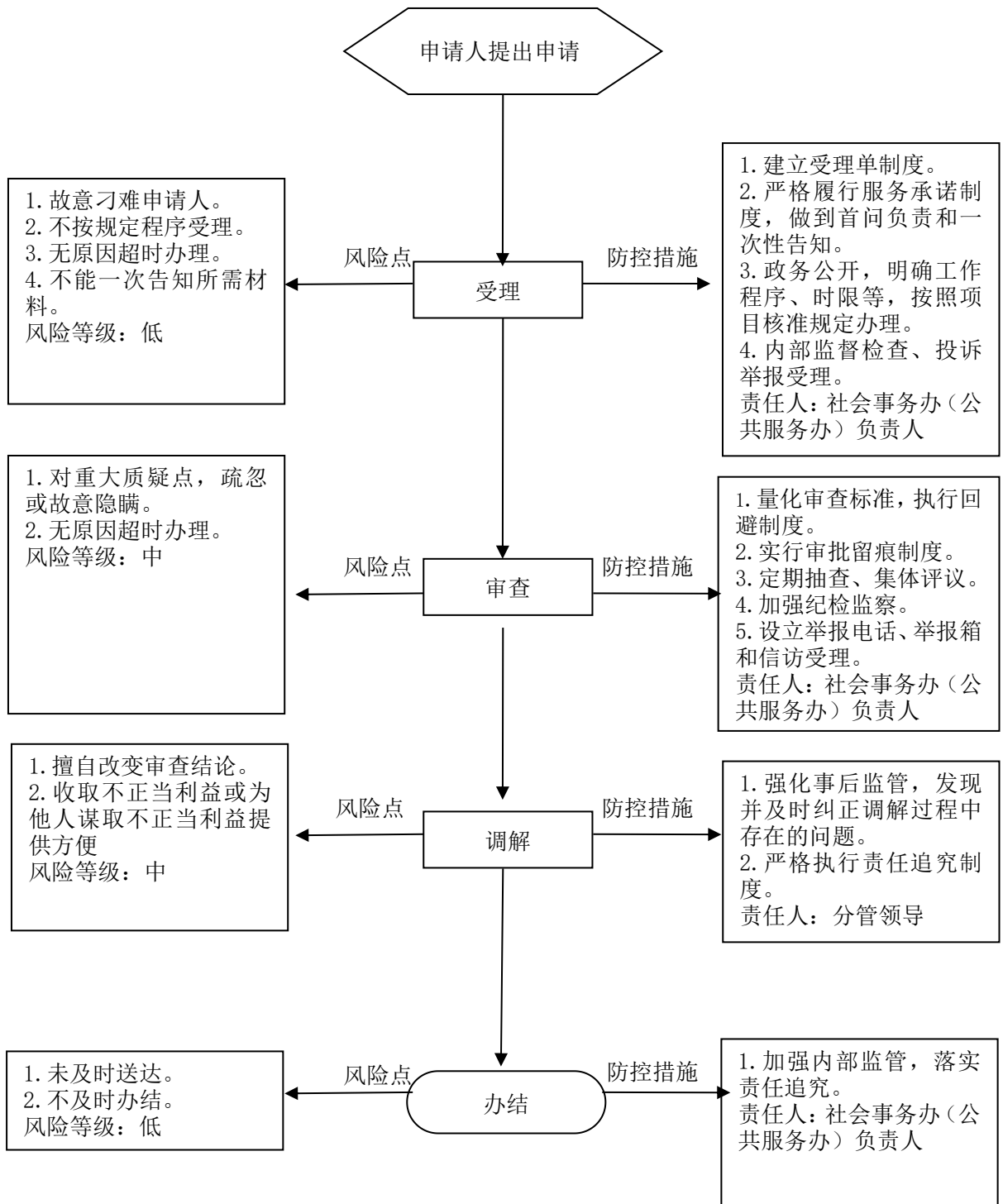
6、行政确认类



7、行政奖励类



8、行政调解类



9、其他权力类

